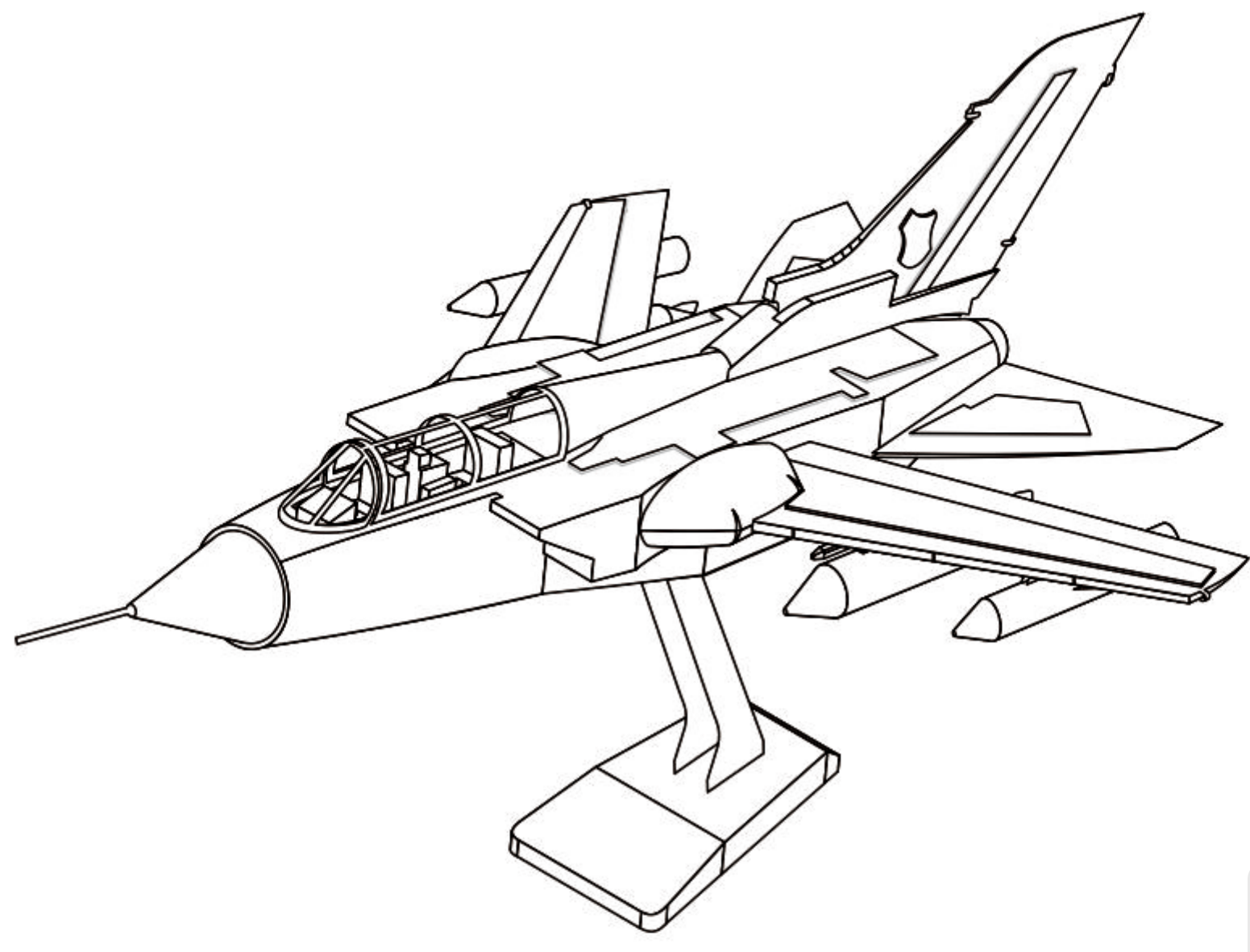


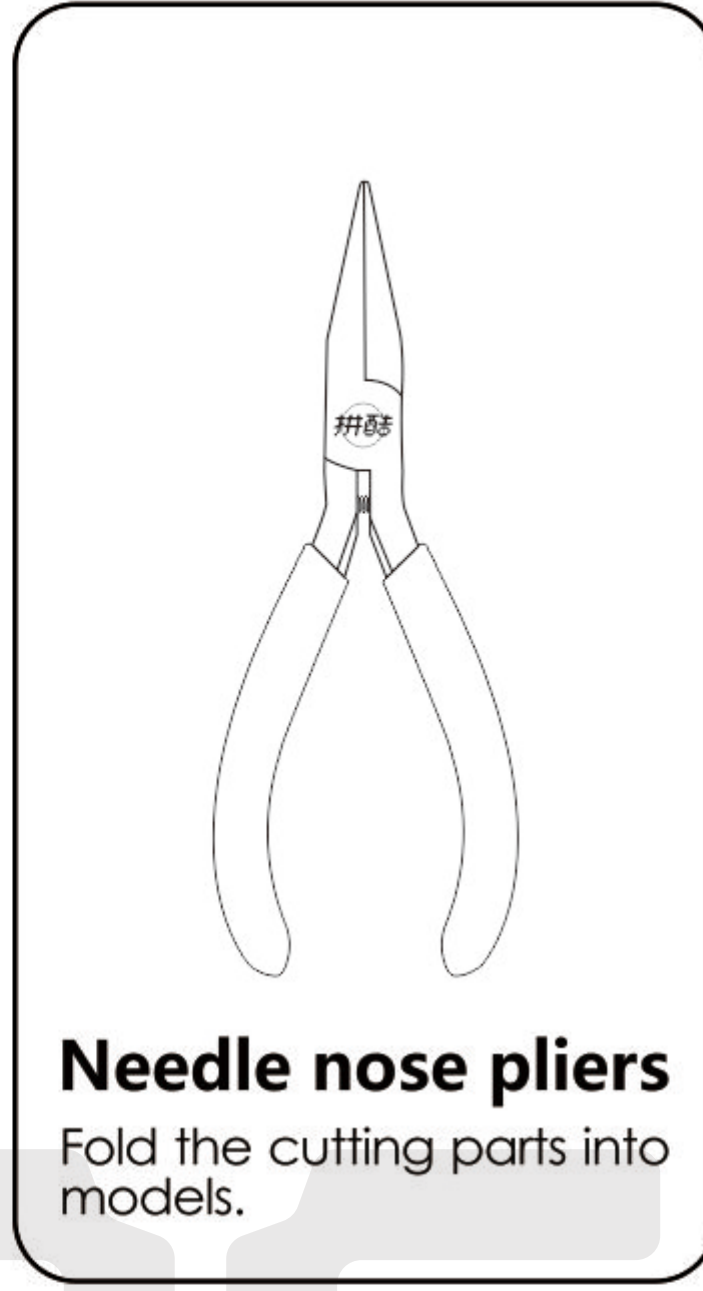
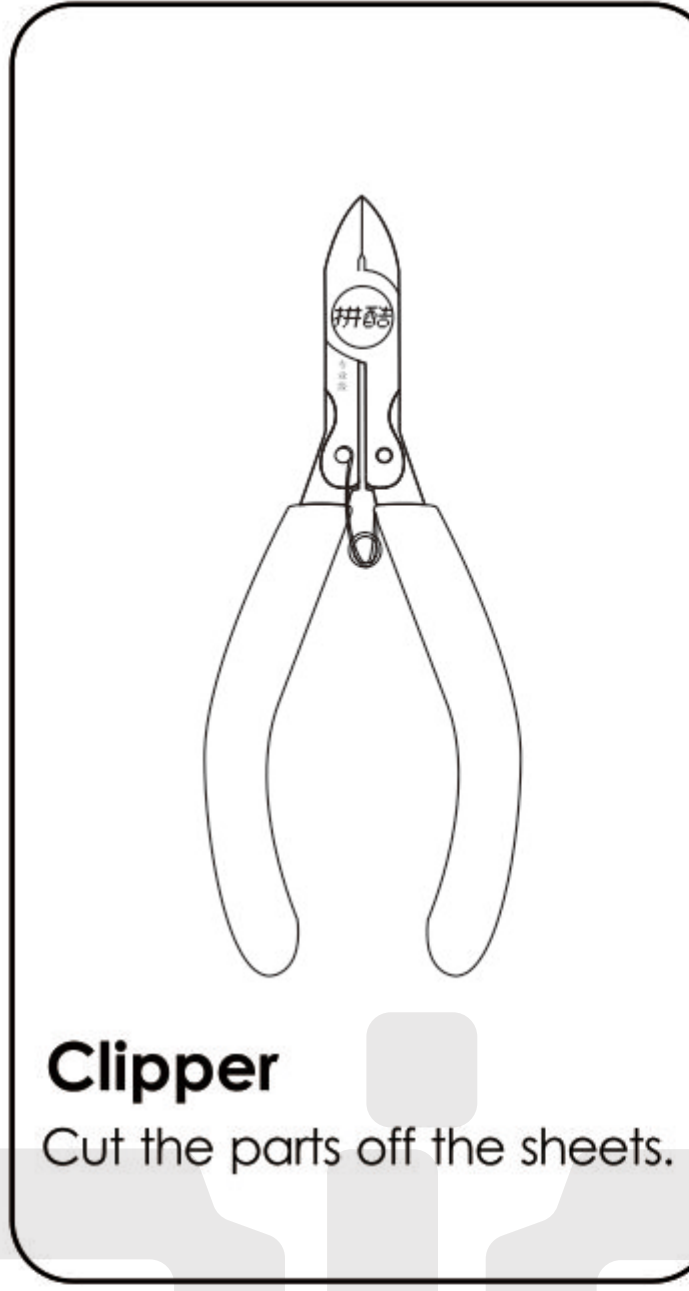
TORNADO FIGHTER JETS HP070



CP-ASSY-HP070#-A1-20201216

Installation Reminder

- Prepare tools:

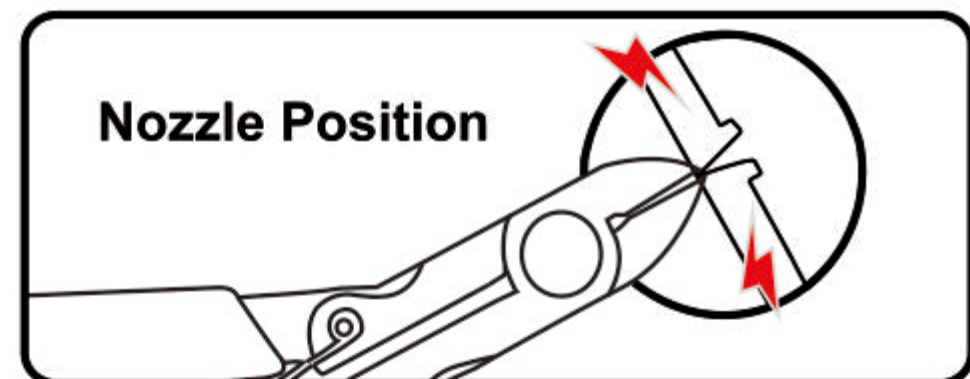


It is recommended to use piececool authentic assembly tools to build or fix the design. It is tailor made for the metal pieces and user friendly.

⚠ Please handle the metal trim carefully to prevent scratches.

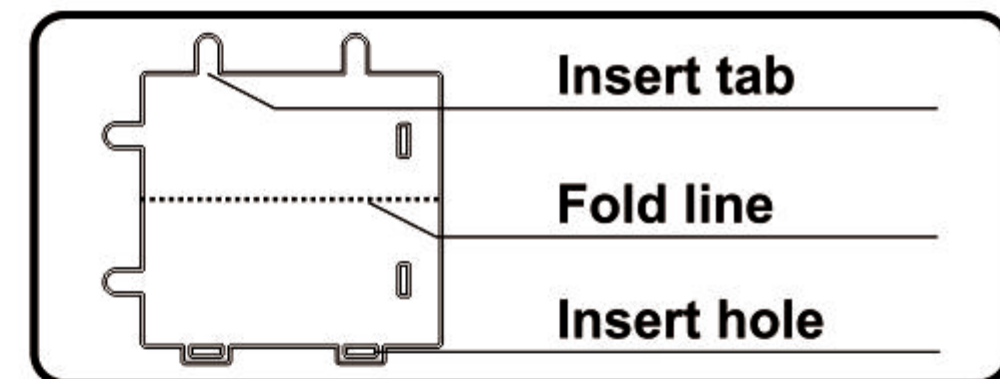
• Installation Method:

a. Remove the parts



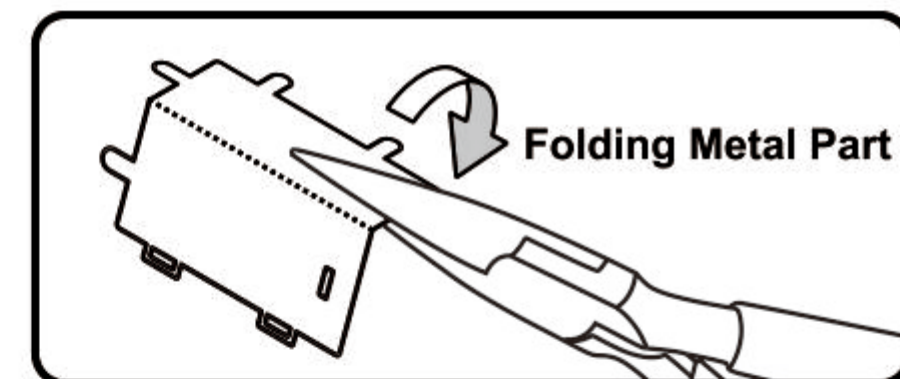
Please use the clipper to cut the nozzle position and remove the parts.

b. Identify the parts



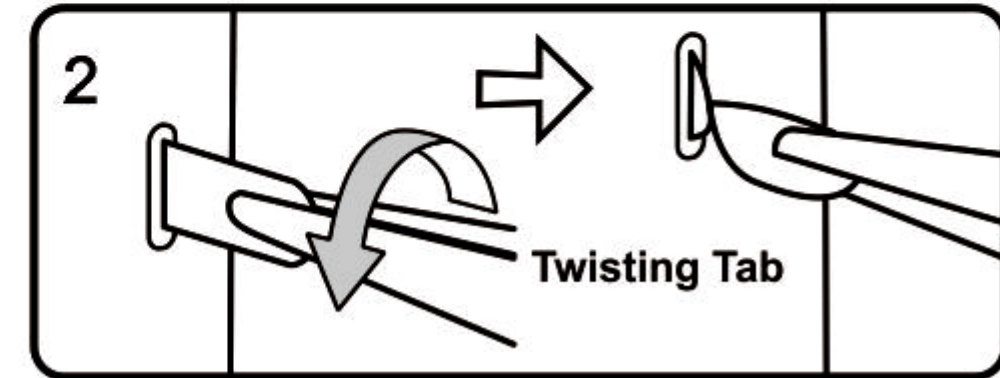
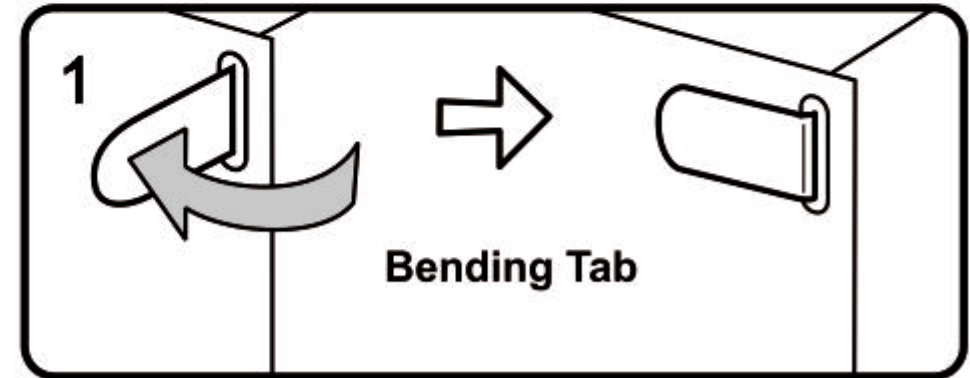
Identify the insert tab, fold line and the insert hole.

c. Folding the parts



Please use the Needle nose pliers to fold the cutting parts into models.

d. Retaining the parts



● Insert the hole, bending tab with angle 90°

▲ Insert the hole, twisting tab with angle 90°

• Attention:

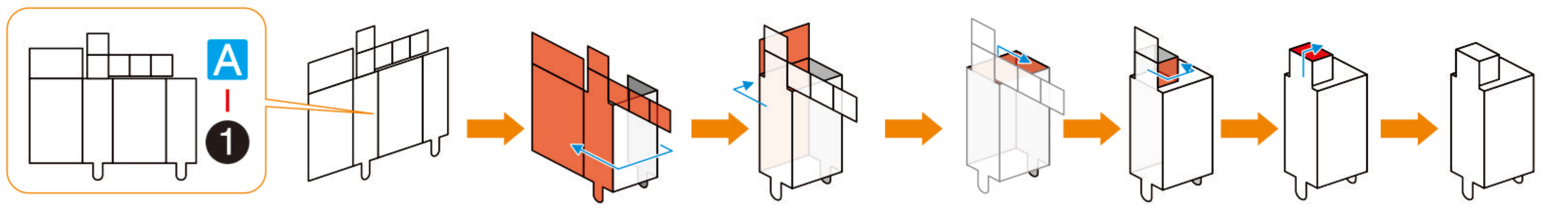
- E** Engraved / Color side
- NE** Non-engraved / Silver side
- !** Attention Point
- ||** Keep the parts symmetrical

When cutting metal parts, please do not cut the "insert tab" as "nozzle position". Only cut the parts of the current step when cutting the parts. Do not cut all the parts at one time to avoid loss.

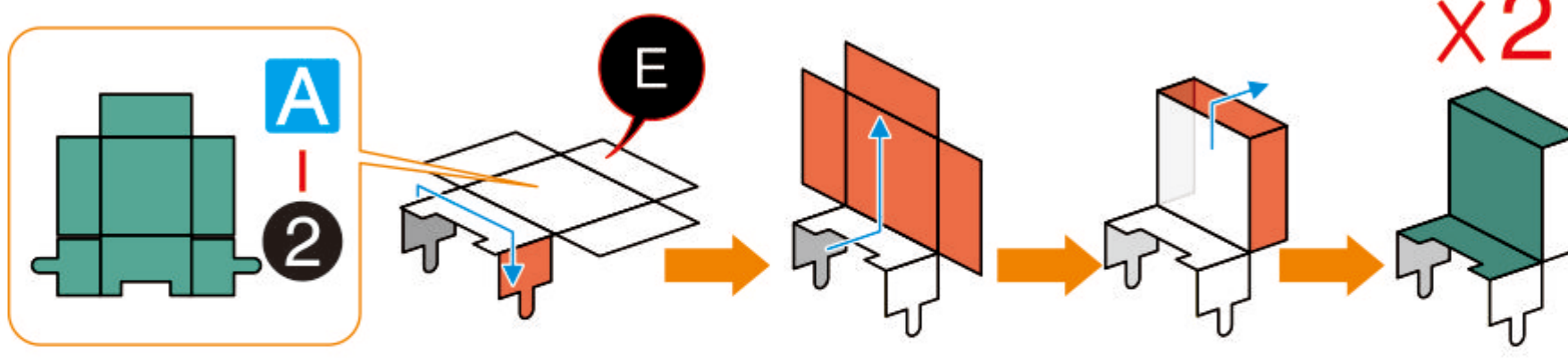
When encountering the parts of the folding line, please pay attention to the front and back of the metal sheet and the direction of the folding. According to the direction indicated in the instruction, cut lightly and fold slowly. It is best to fold it once. Do not fold it repeatedly to avoid damage to the parts.

Assembly Flow Chart

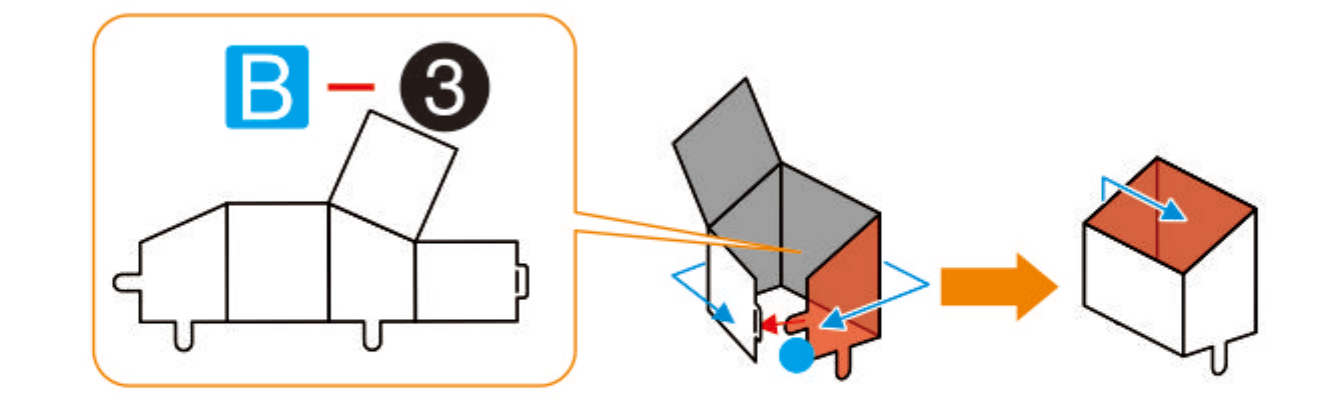
Step 1



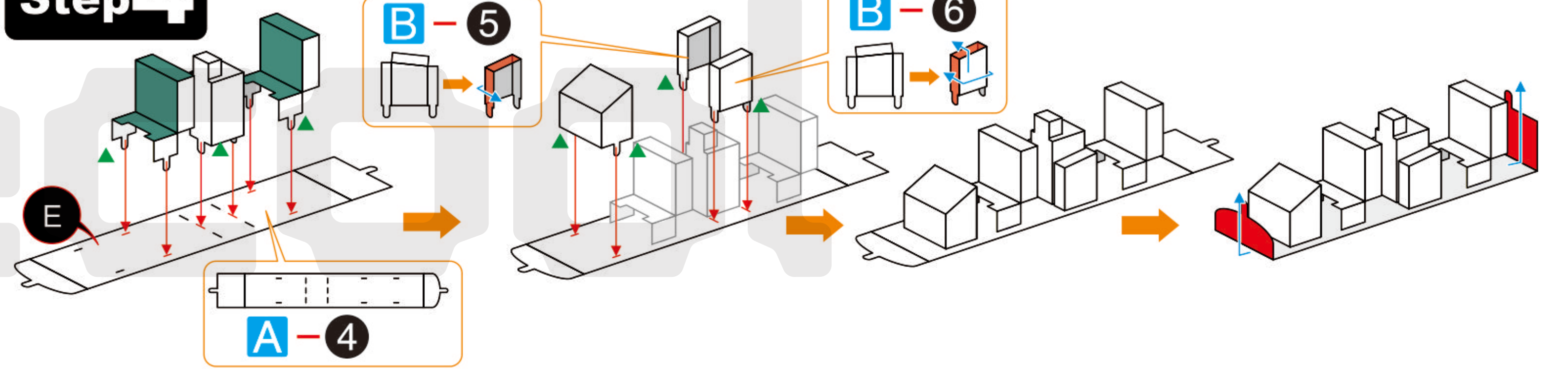
Step 2



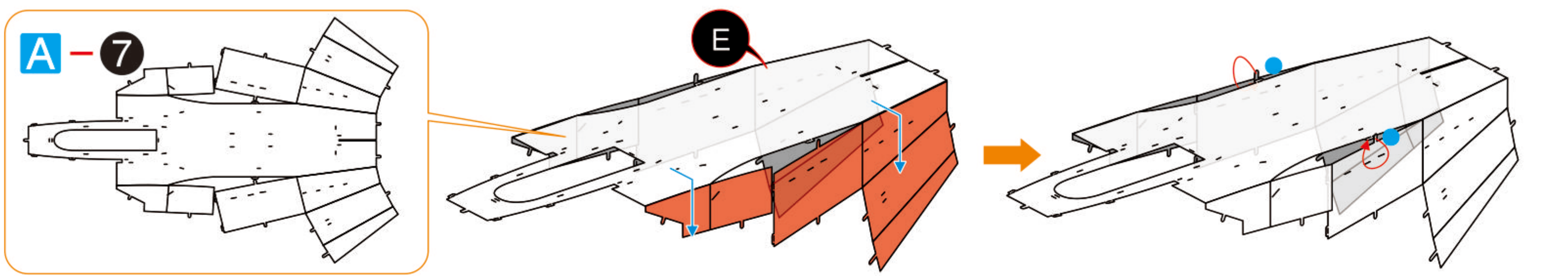
Step 3



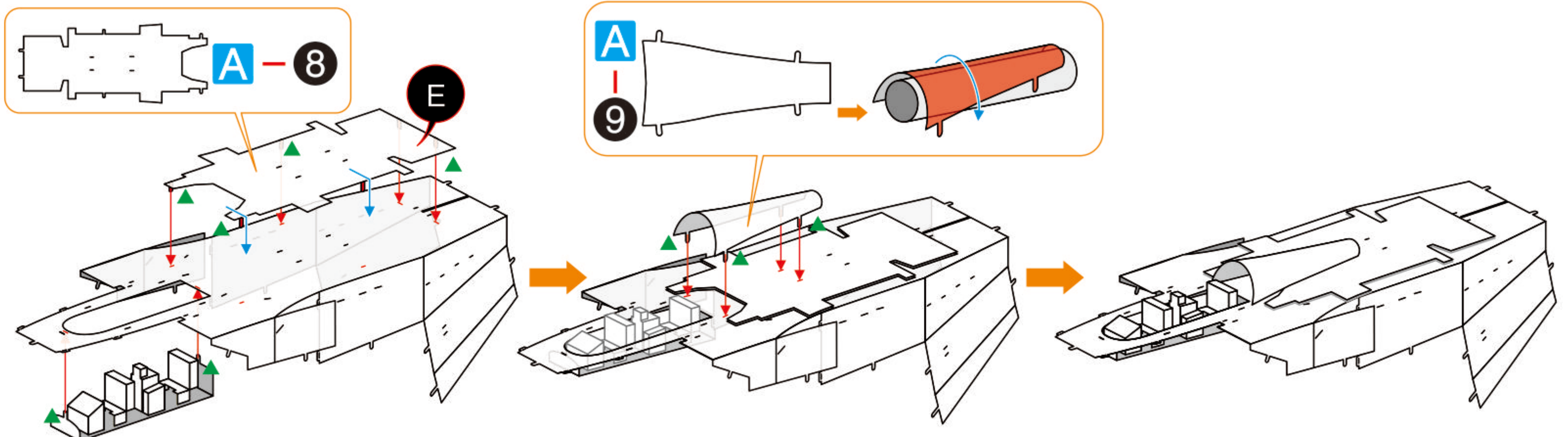
Step 4



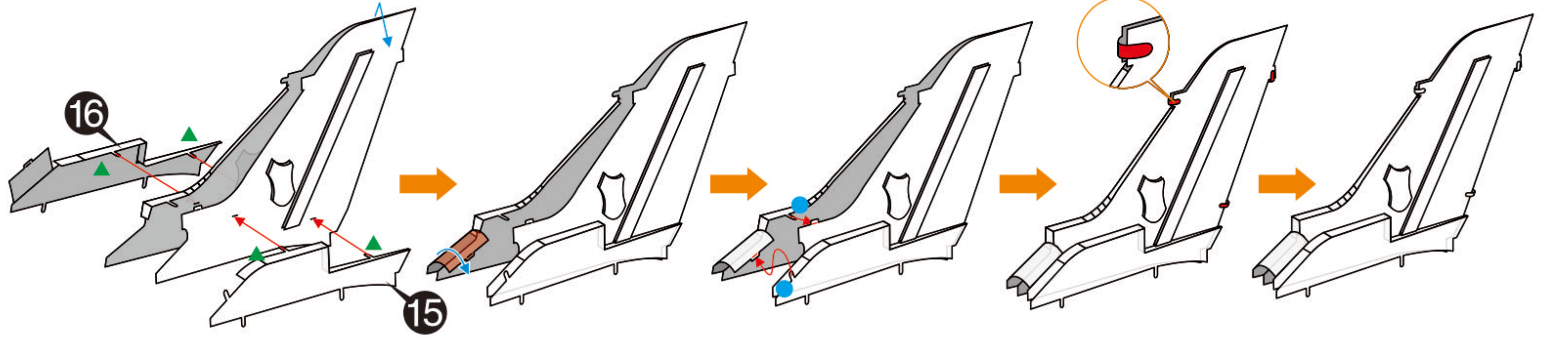
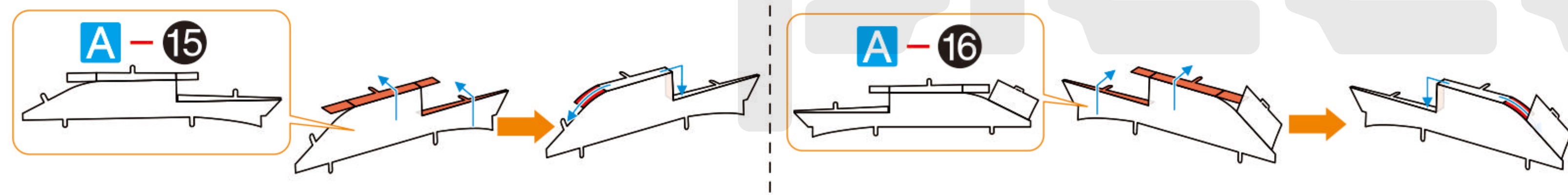
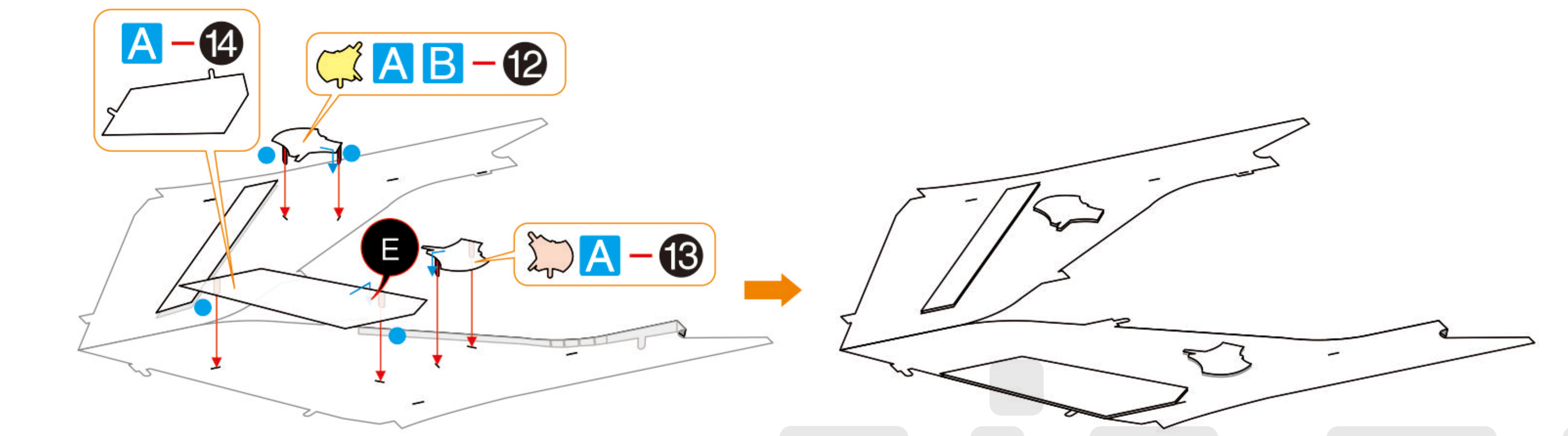
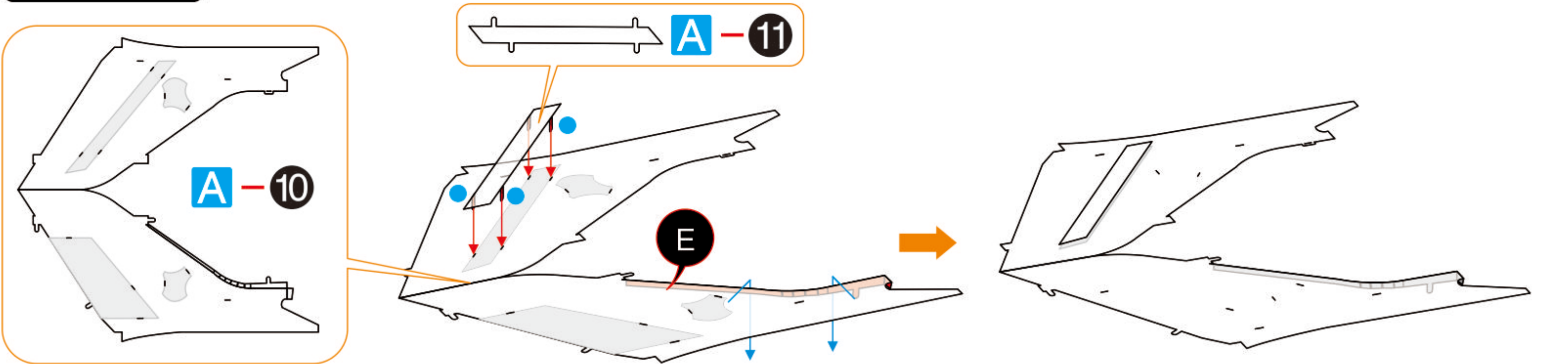
Step 5



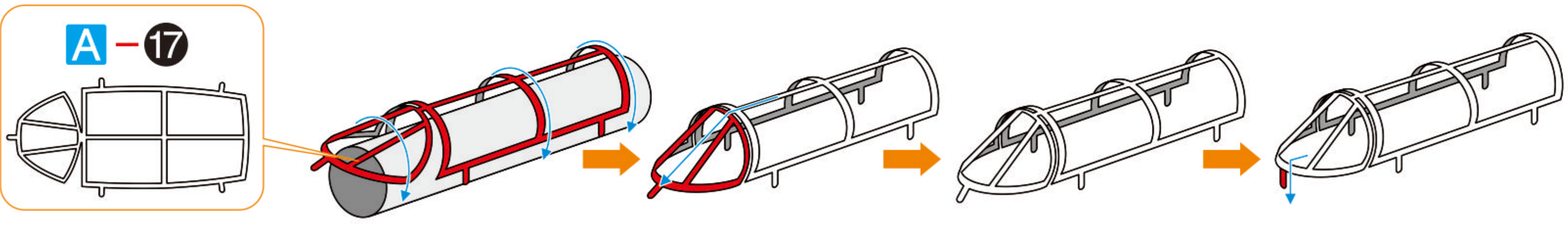
Step 6



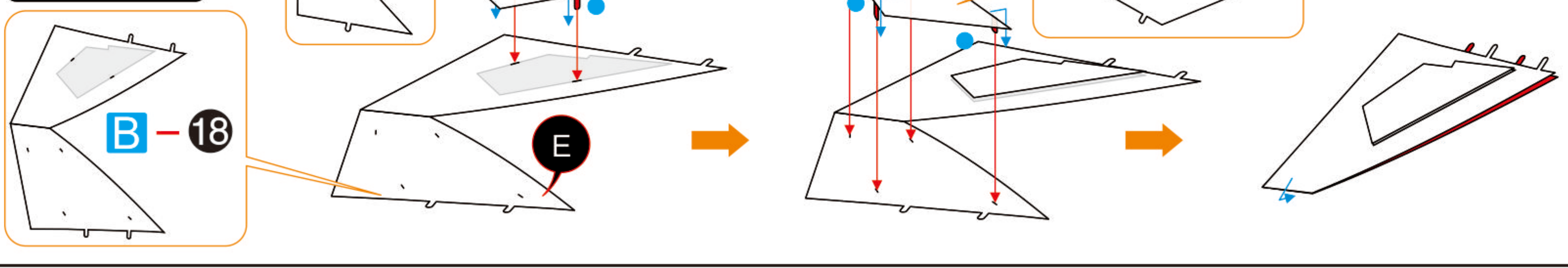
Step 7



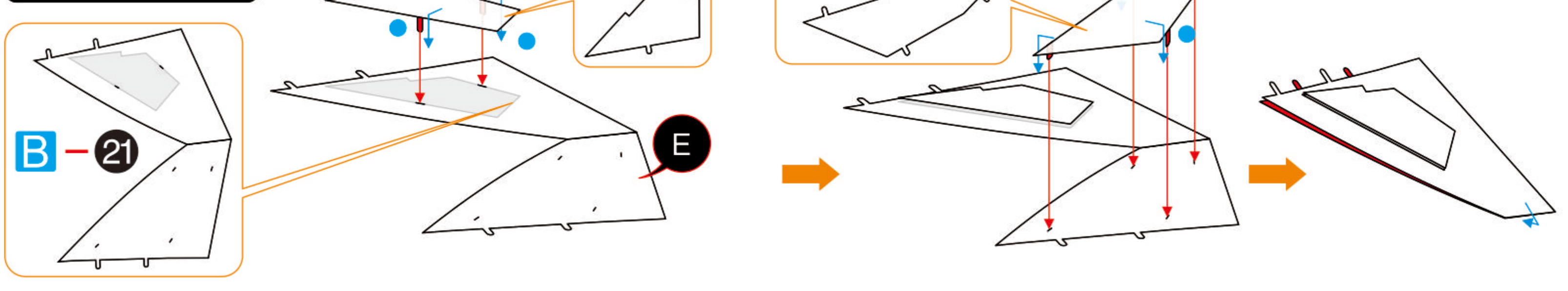
Step 8



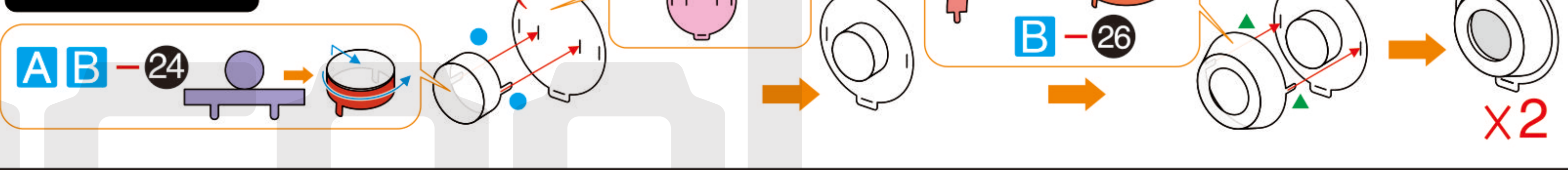
Step 9



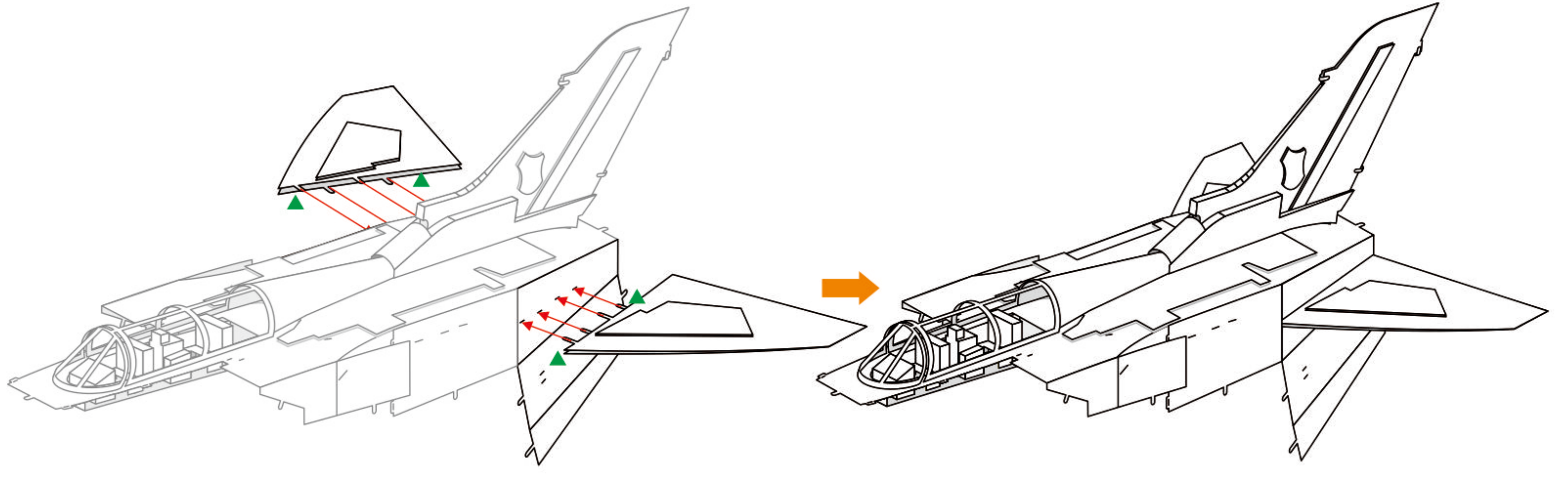
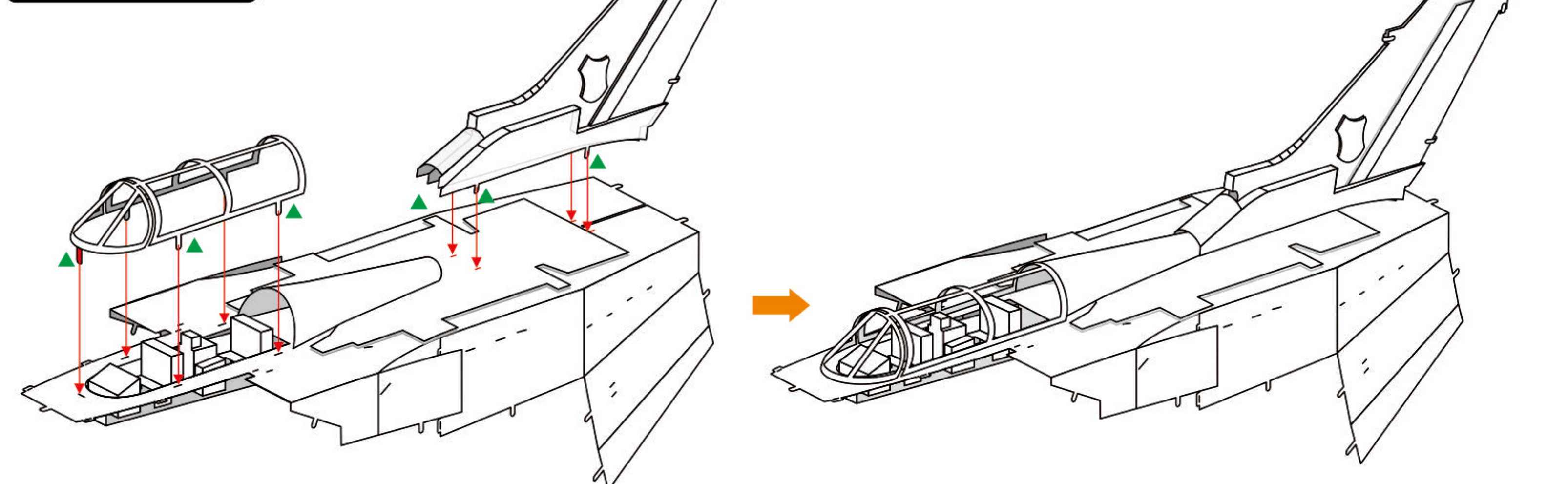
Step 10



Step 11

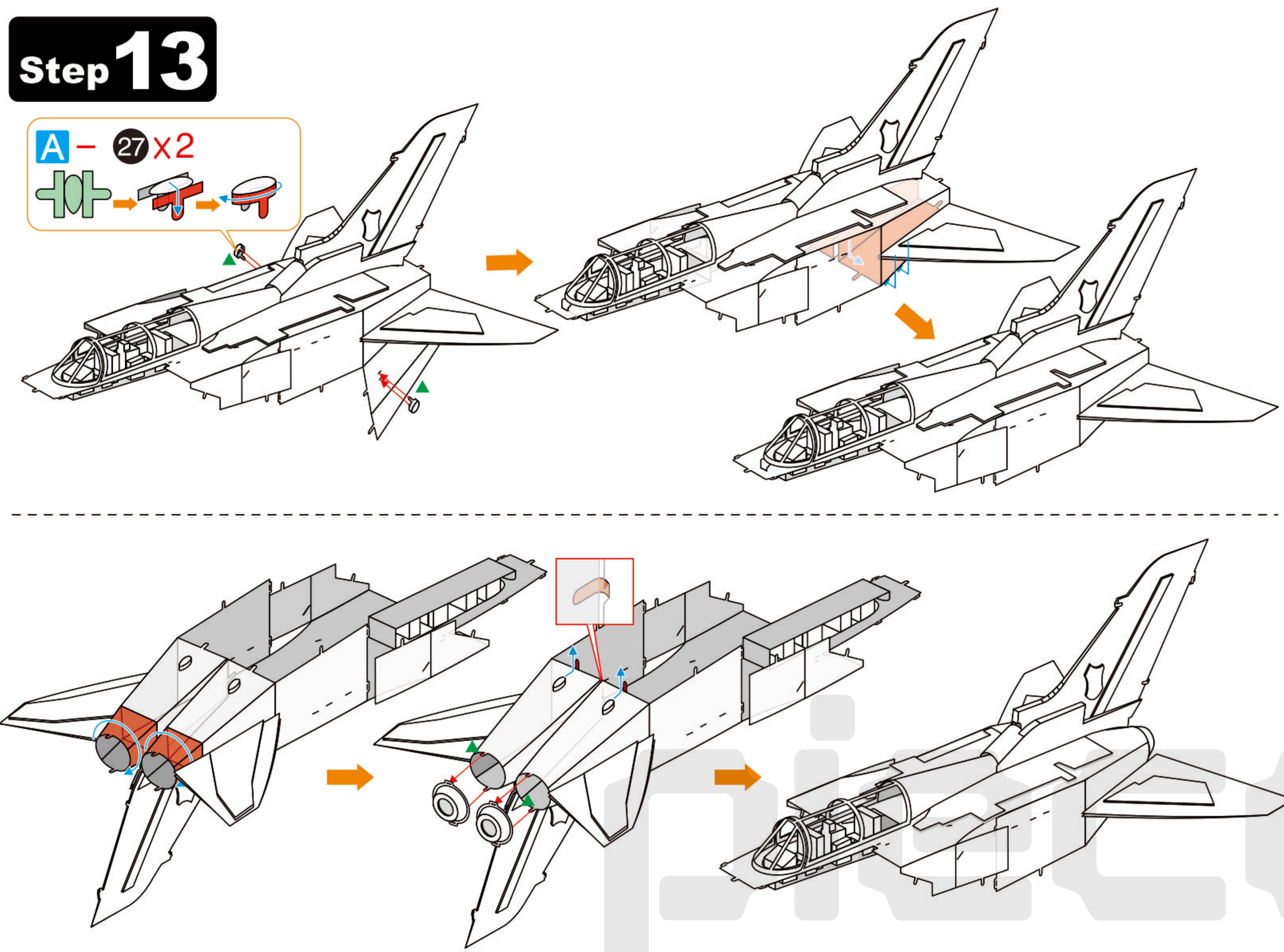


Step 12

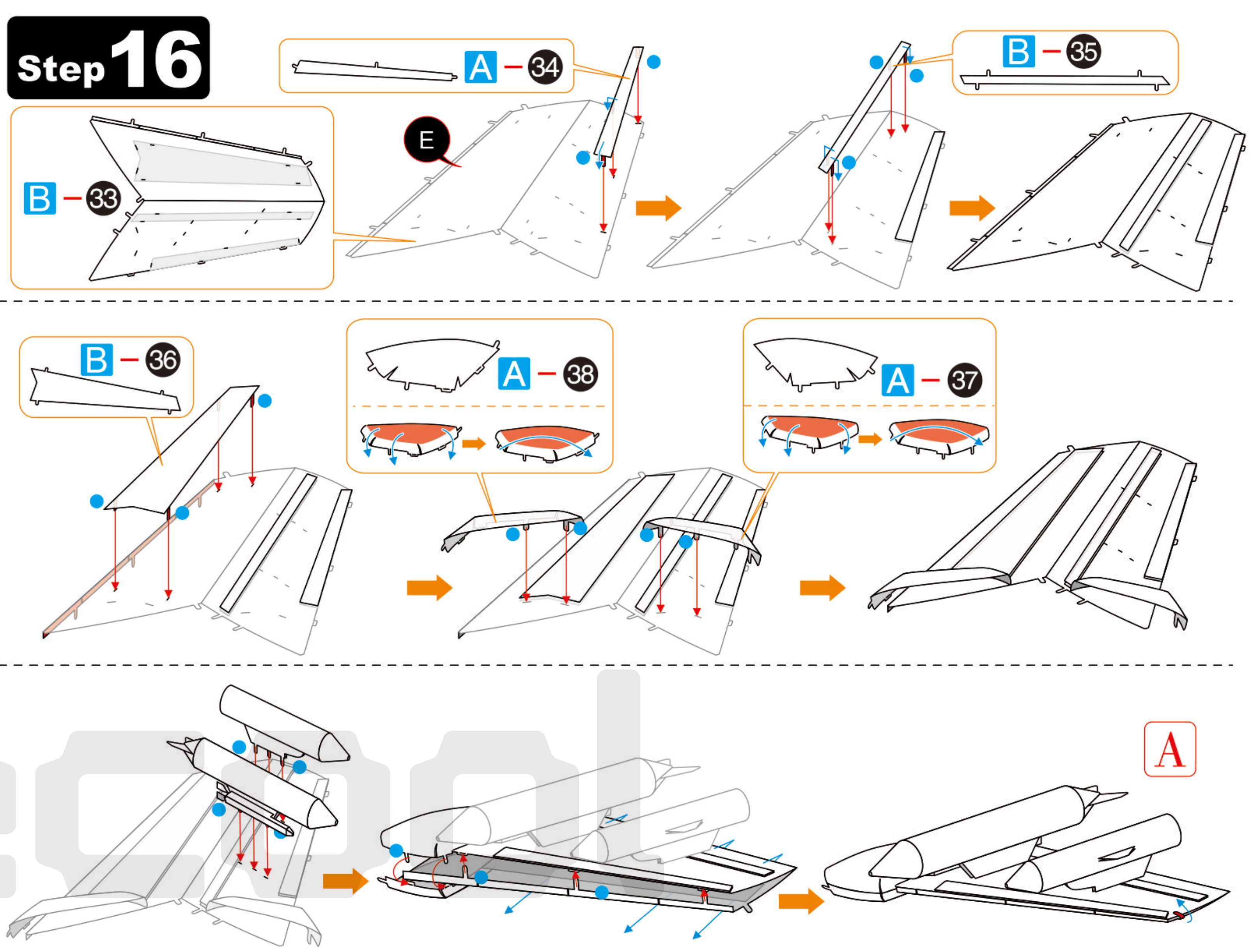


Step 13

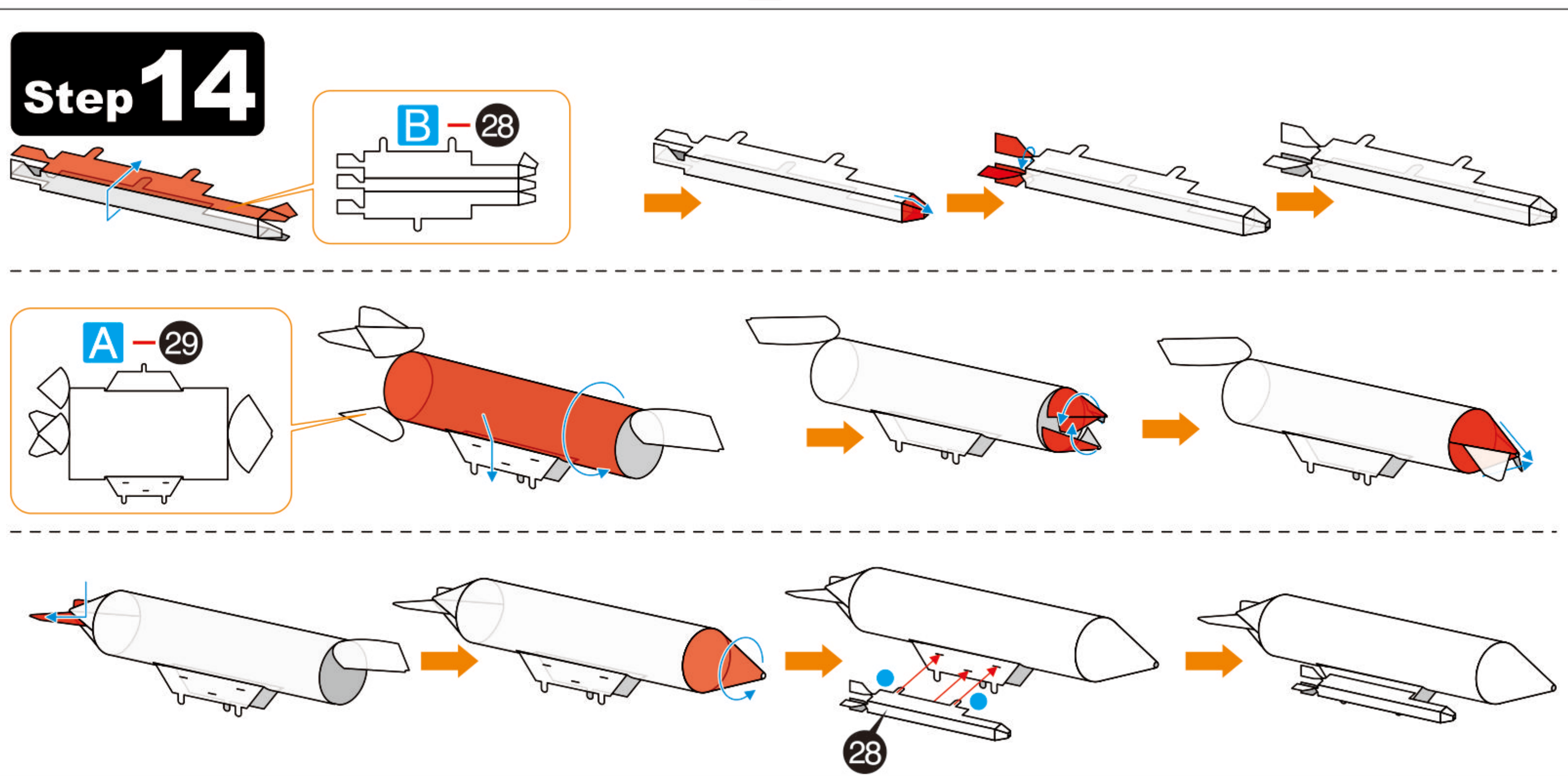
A-27 x 2



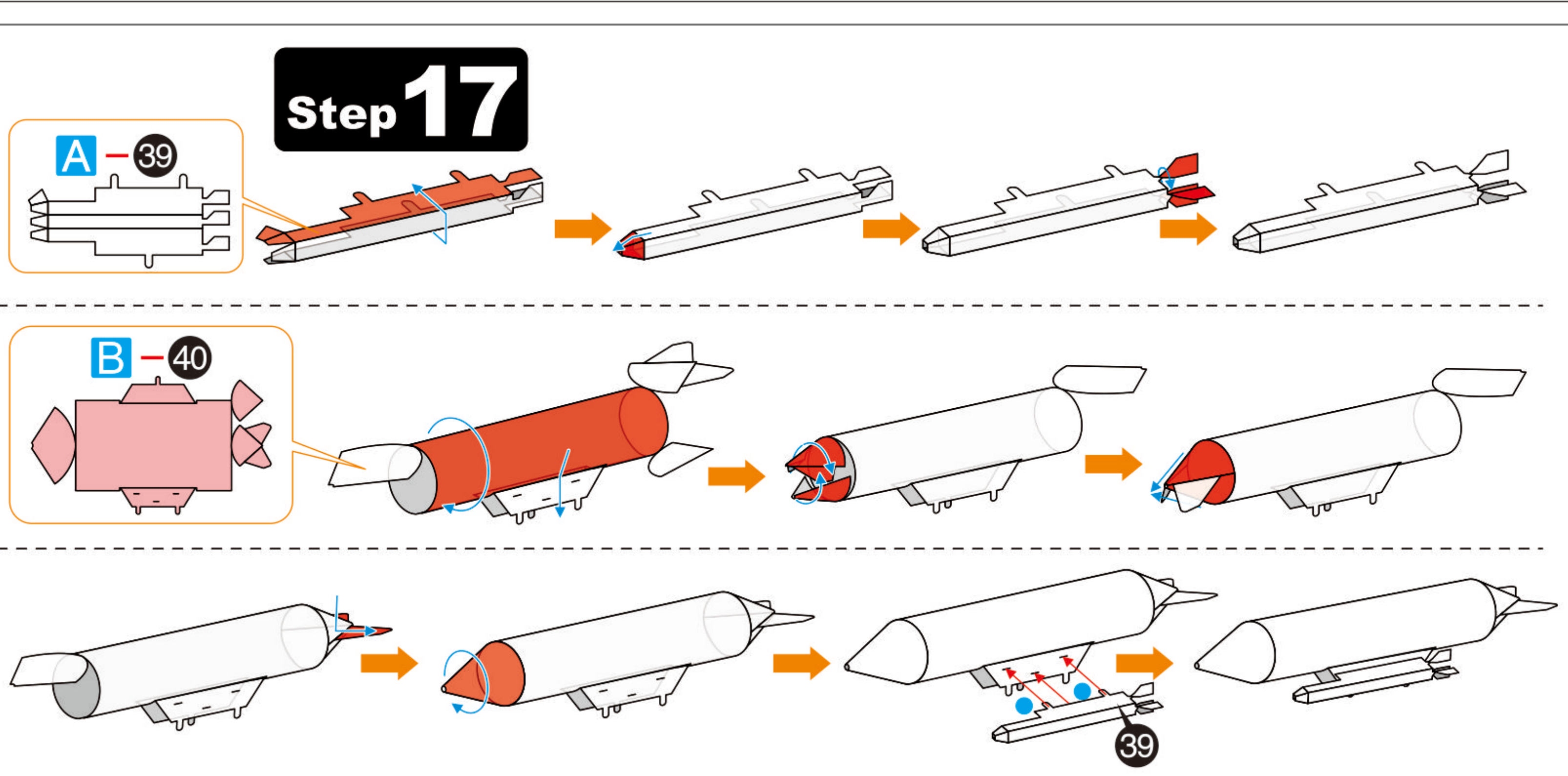
Step 16



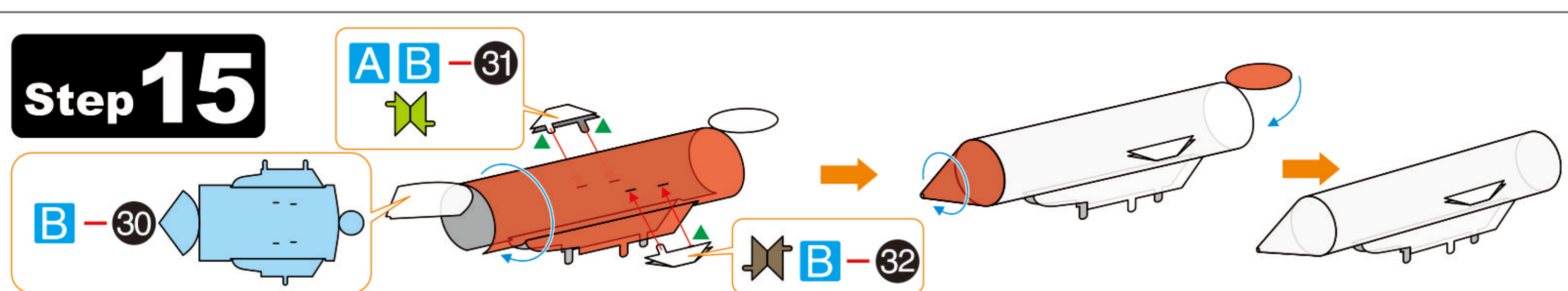
Step 14



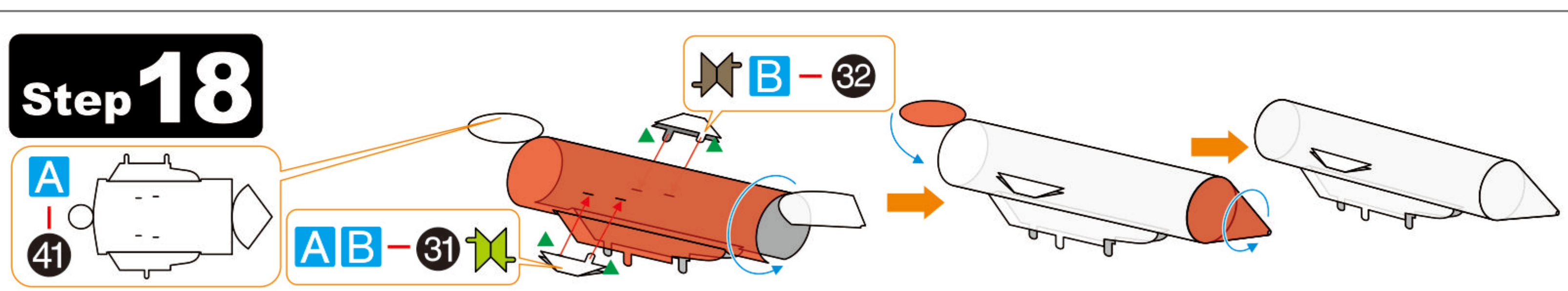
Step 17



Step 15

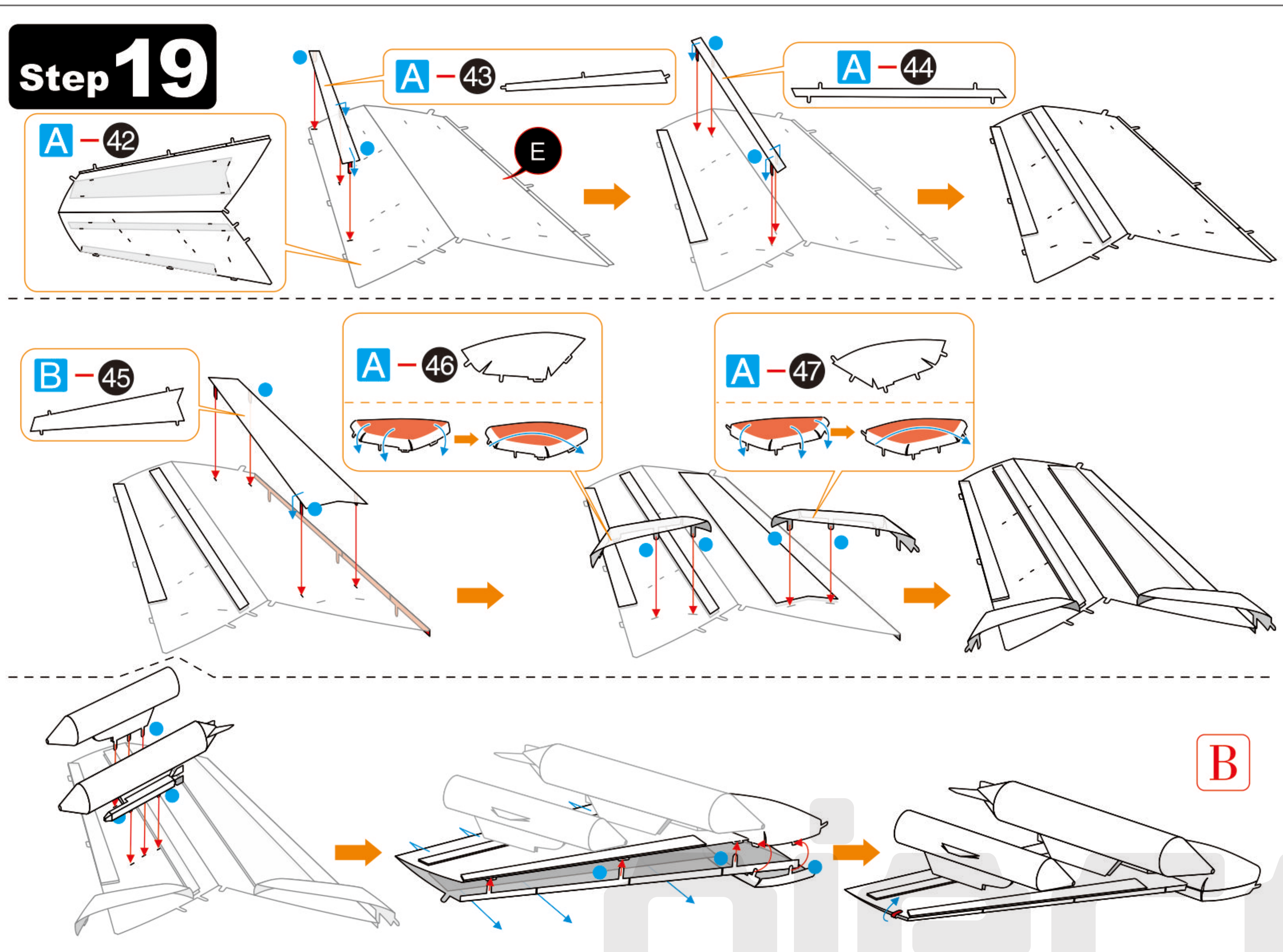


Step 18

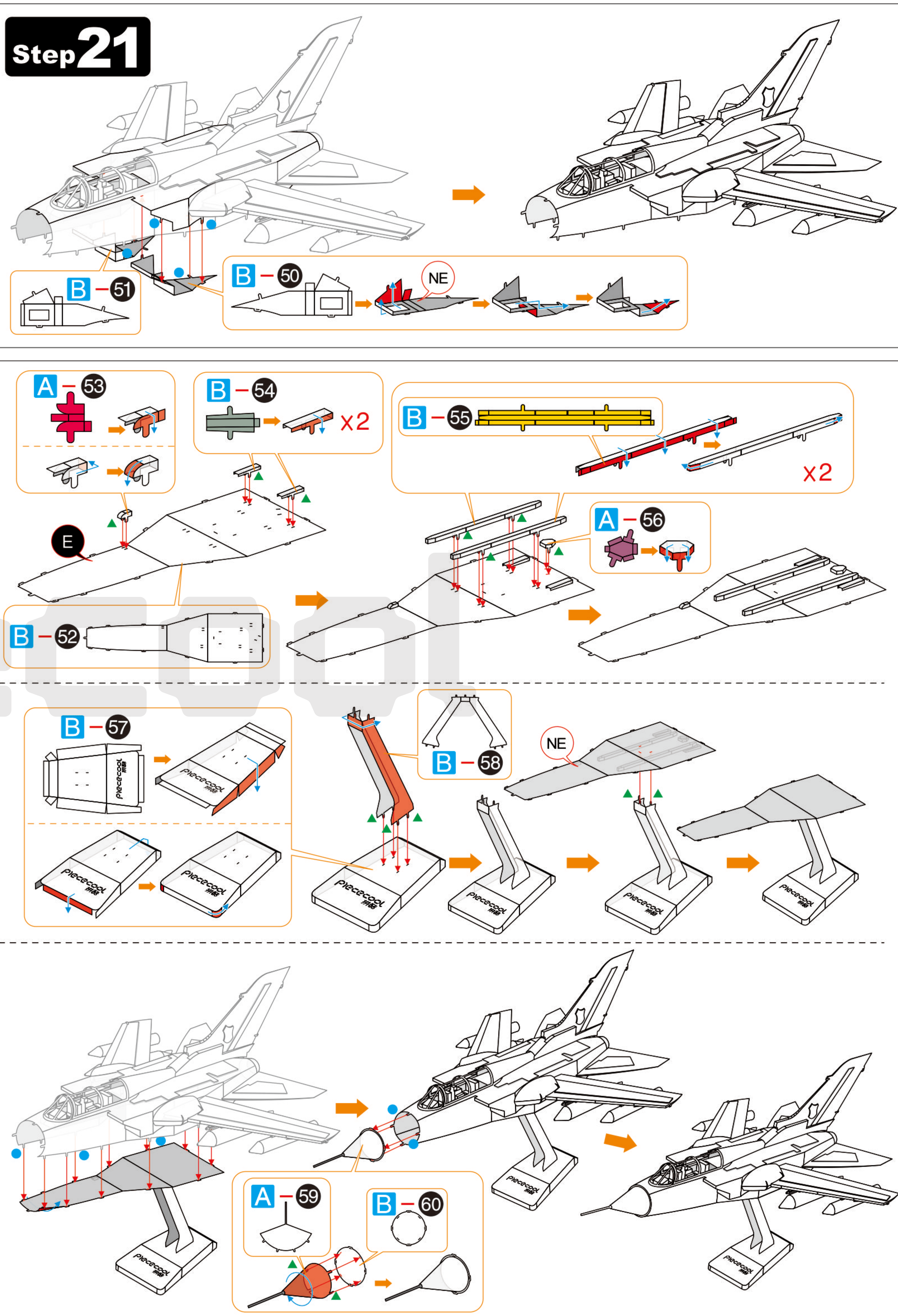


5 6
7 8

Step 19



Step 21



Step 20

