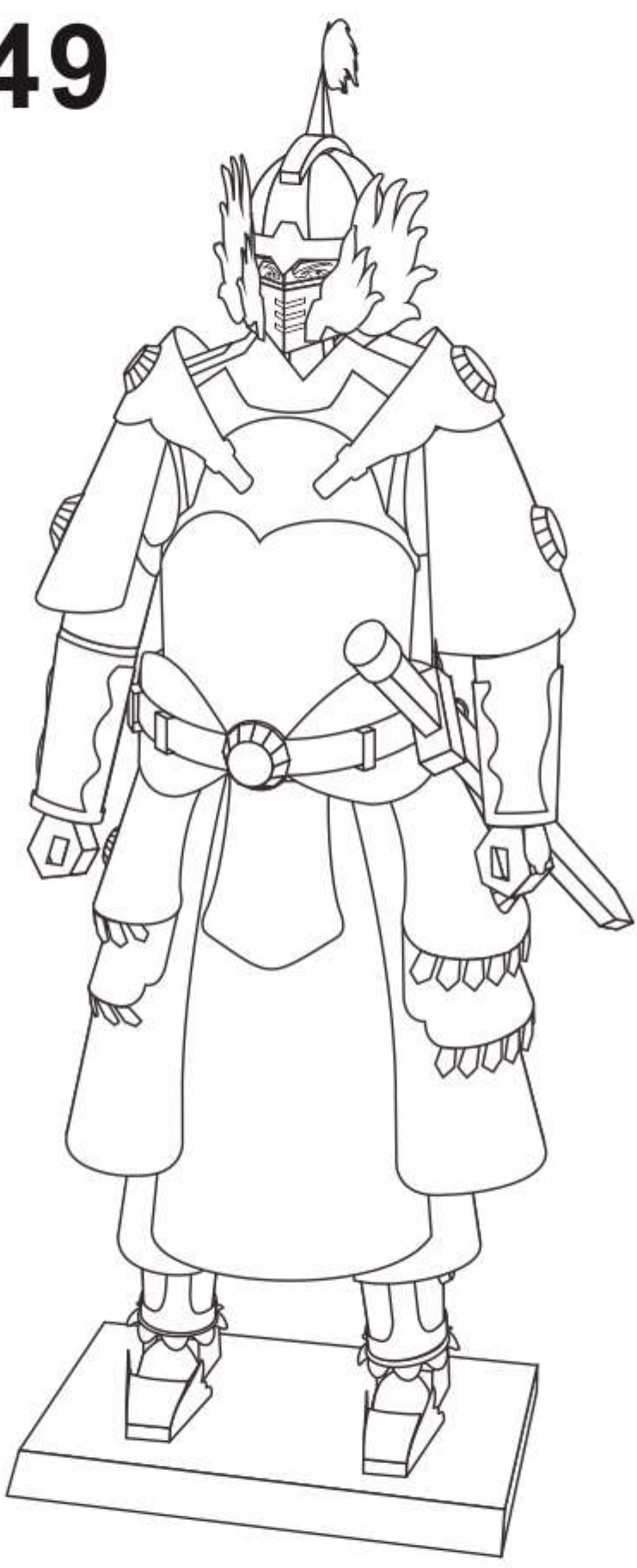


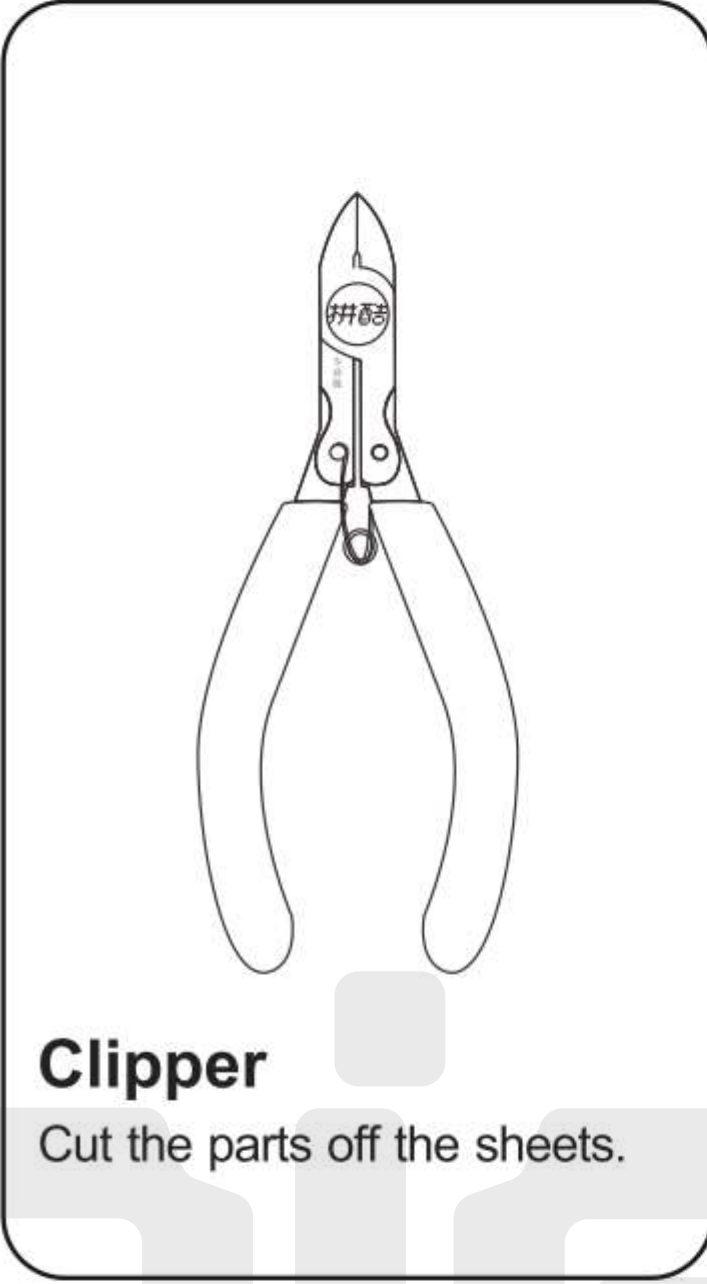
WARRIOR'S ARMOR
HP049



CP-ASSY-HP049#-A1-20210413

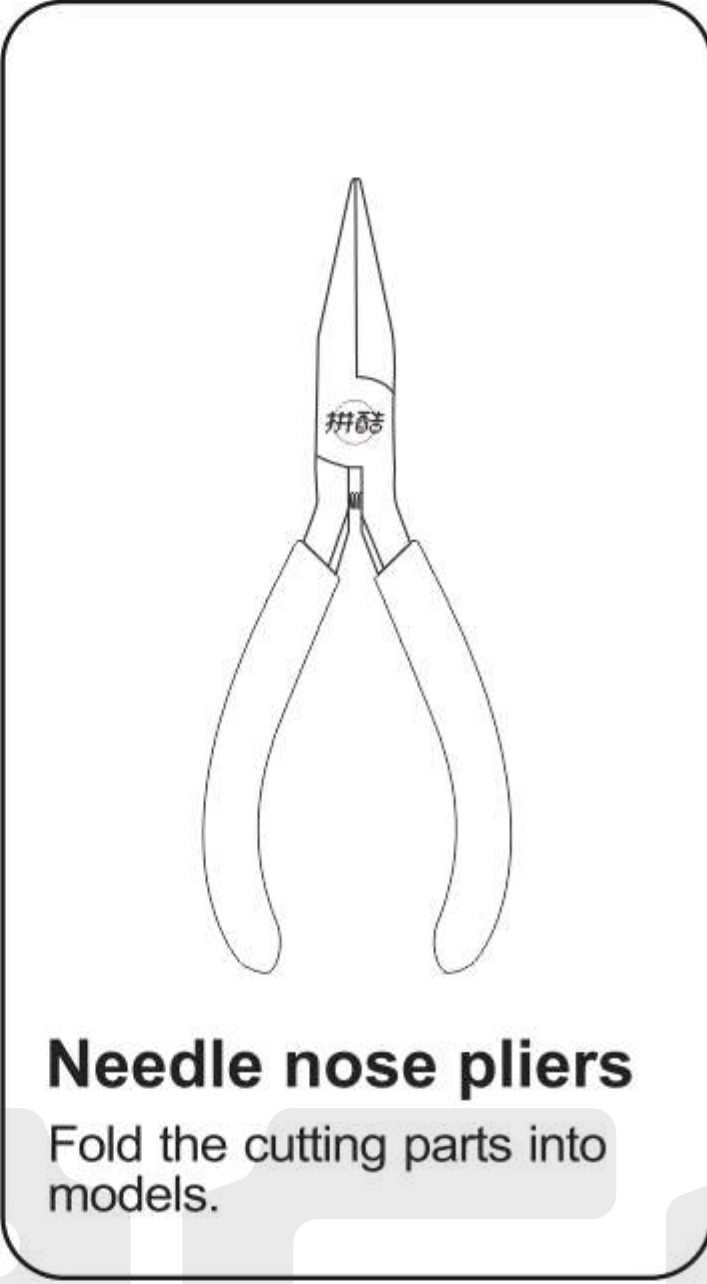
Installation Reminder

• Prepare tools:



Clipper

Cut the parts off the sheets.



Needle nose pliers

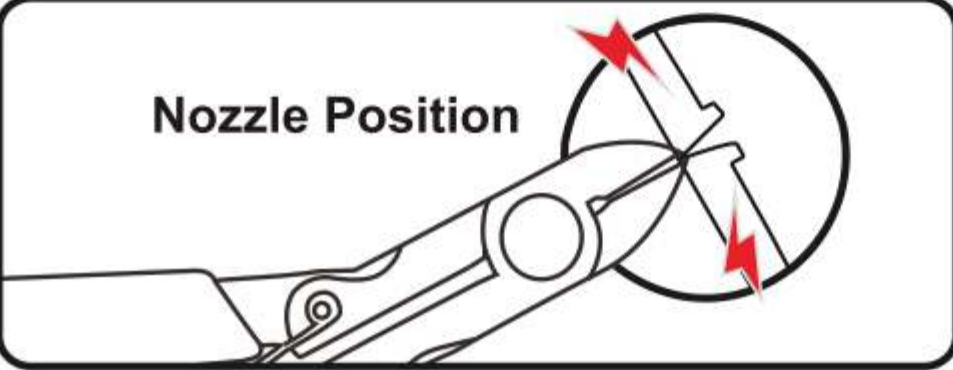
Fold the cutting parts into models.

It is recommended to use piececool authentic assembly tools to build or fix the design. It is tailor made for the metal pieces and user friendly.

WARNING – Please handle metal sheets with care. The parts may have sharp edges that could cut or scratch skin. Keep away from children.

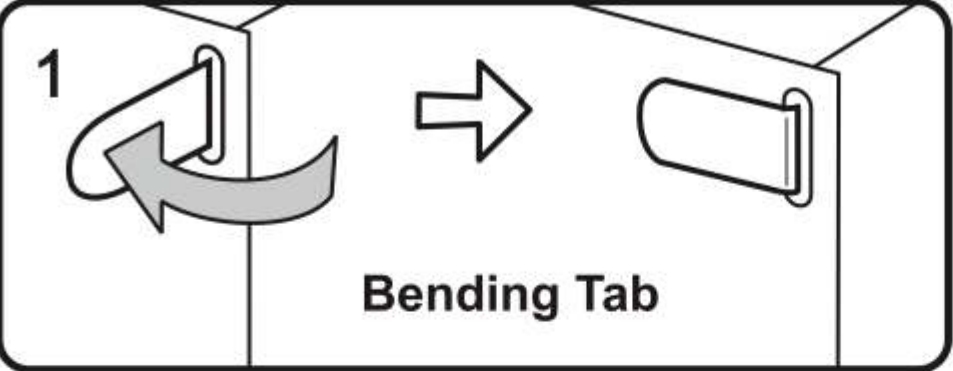
• Installation Method:

a. Remove the parts



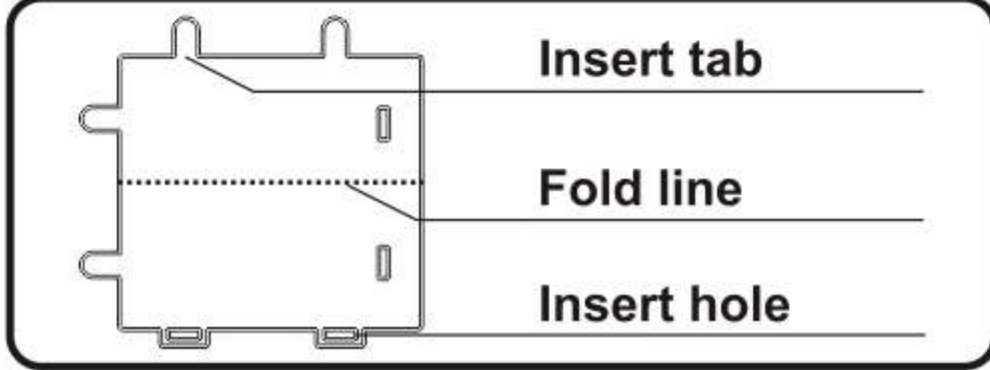
Please use the clipper to cut the nozzle position and remove the parts.

d. Retaining the parts



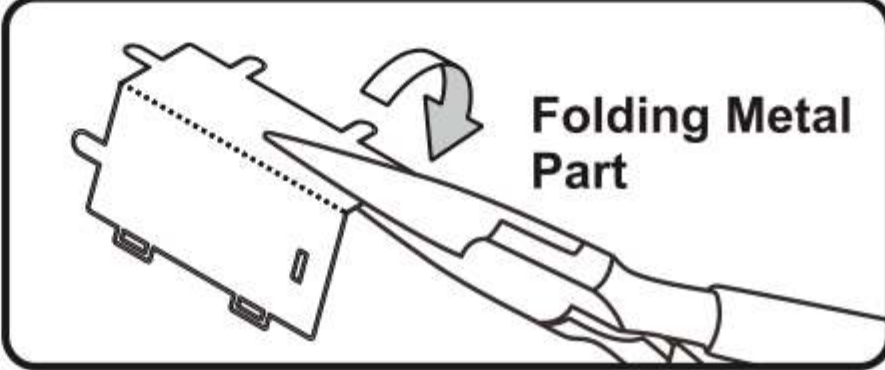
Insert the hole, bending tab with angle 90°

b. Identify the parts



Identify the insert tab, fold line and the insert hole.

c. Folding the parts



Please use the needle nose pliers to fold the cutting parts into models.

• Attention:

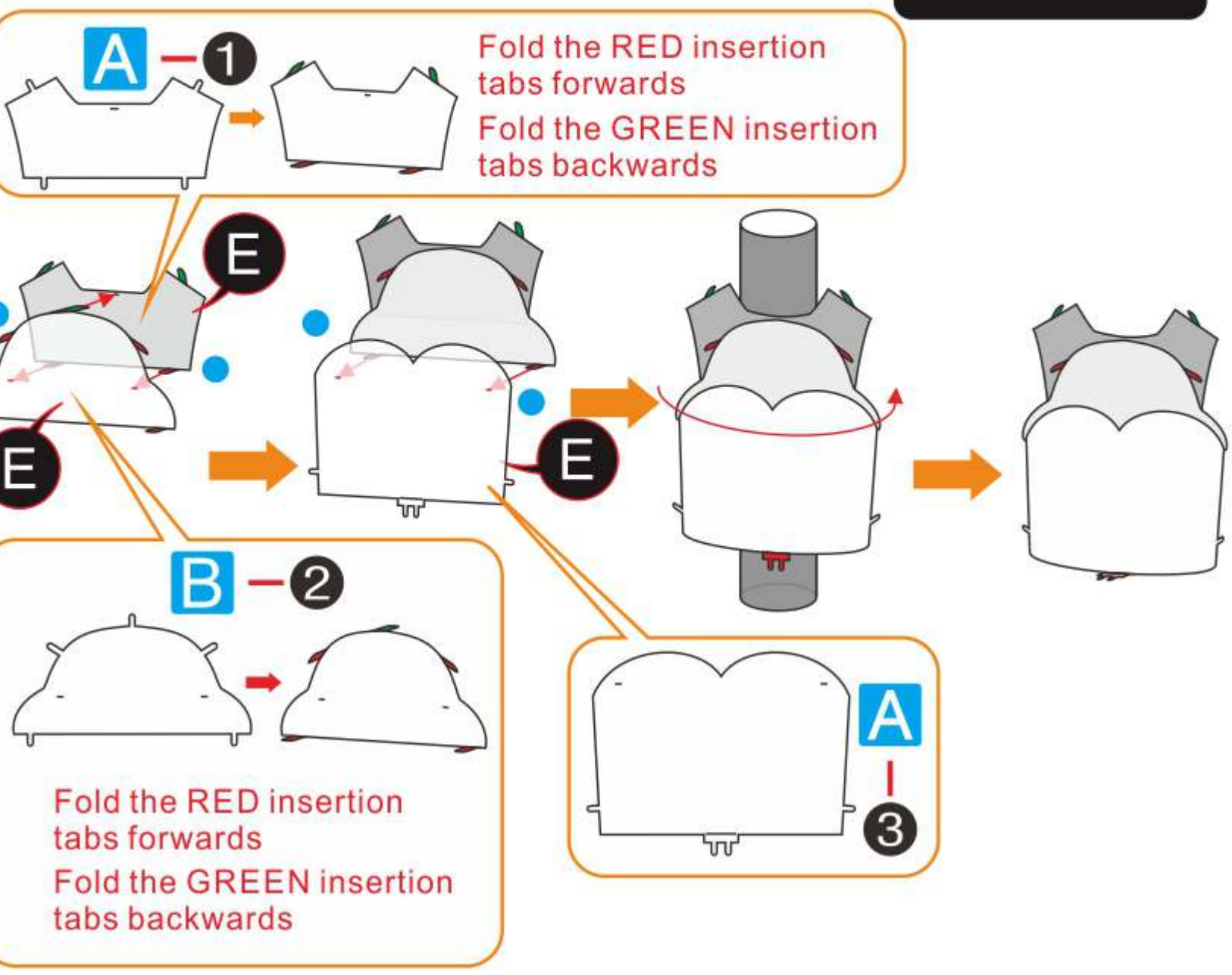
- E** Engraved / Color side
- NE** Non-engraved / Silver side
- !** Attention Point
- Keep the parts symmetrical

When cutting metal parts, please do not cut the “insert tab” as “nozzle position”. Only cut the parts of the current step when cutting the parts. Do not cut all the parts at one time to avoid loss.

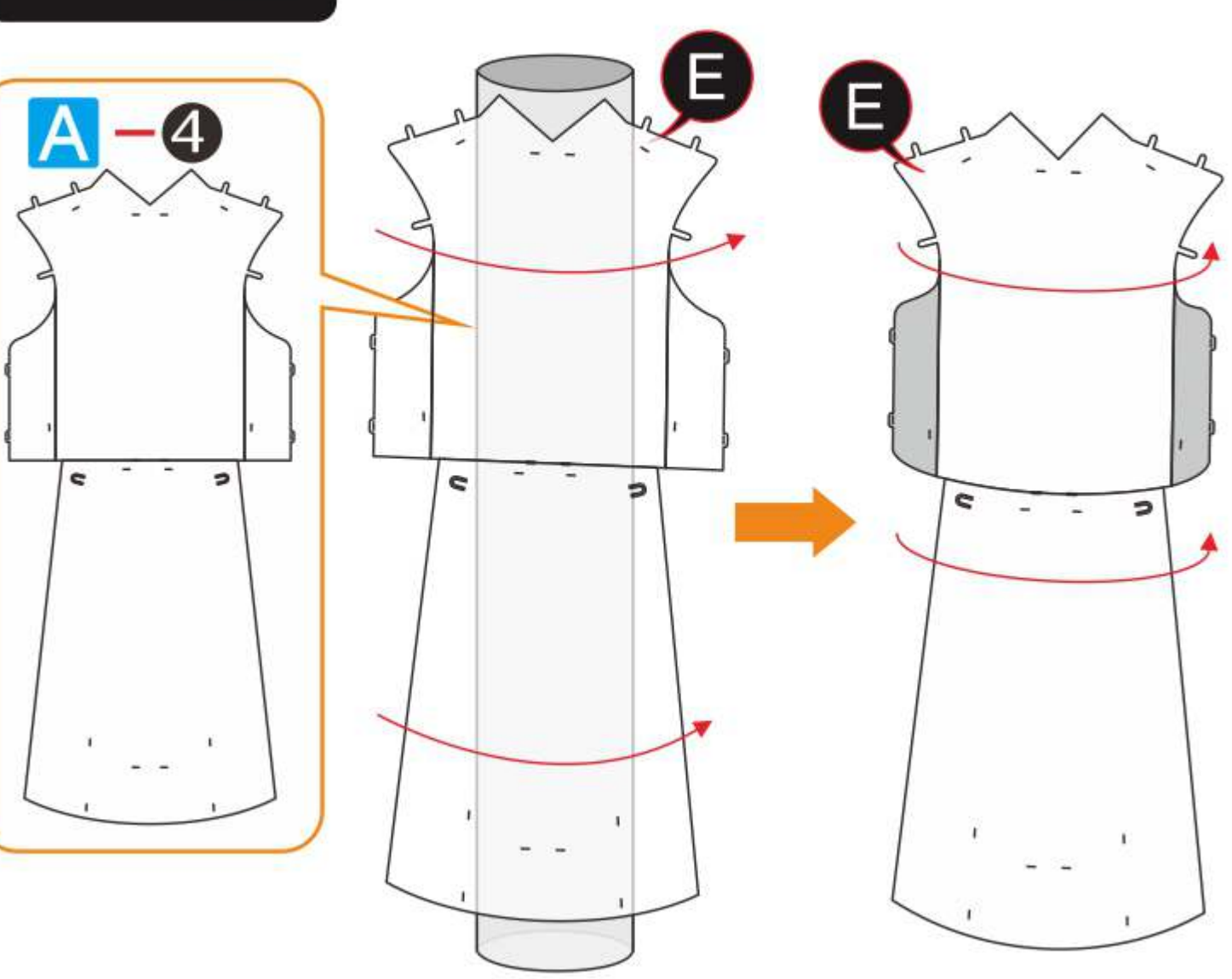
When encountering the parts of the folding line, please pay attention to the front and back of the metal sheet and the direction of the folding. According to the direction indicated in the instruction, cut lightly and fold slowly. It is best to fold it once. Do not fold it repeatedly to avoid damage to the parts.

Assembly Guide

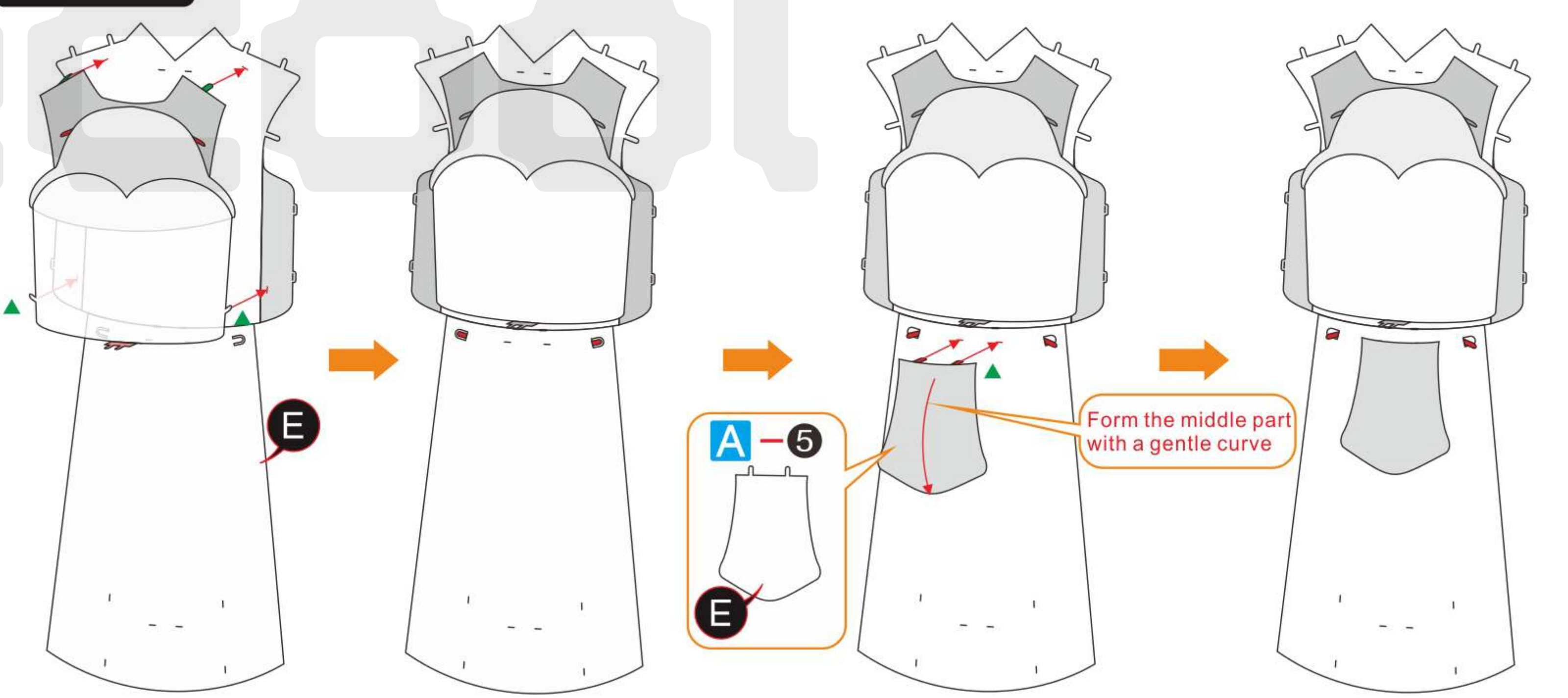
Step1



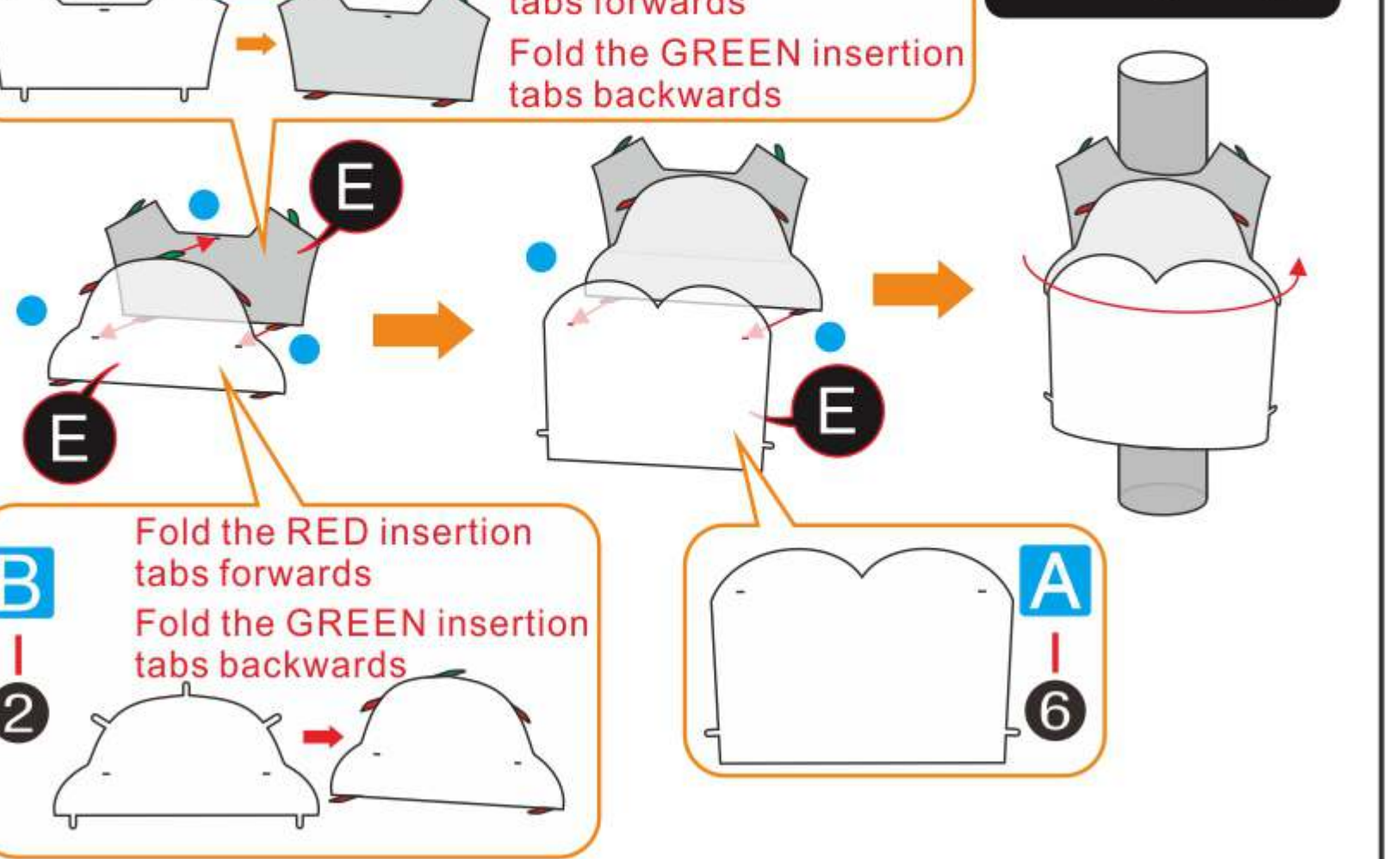
Step2



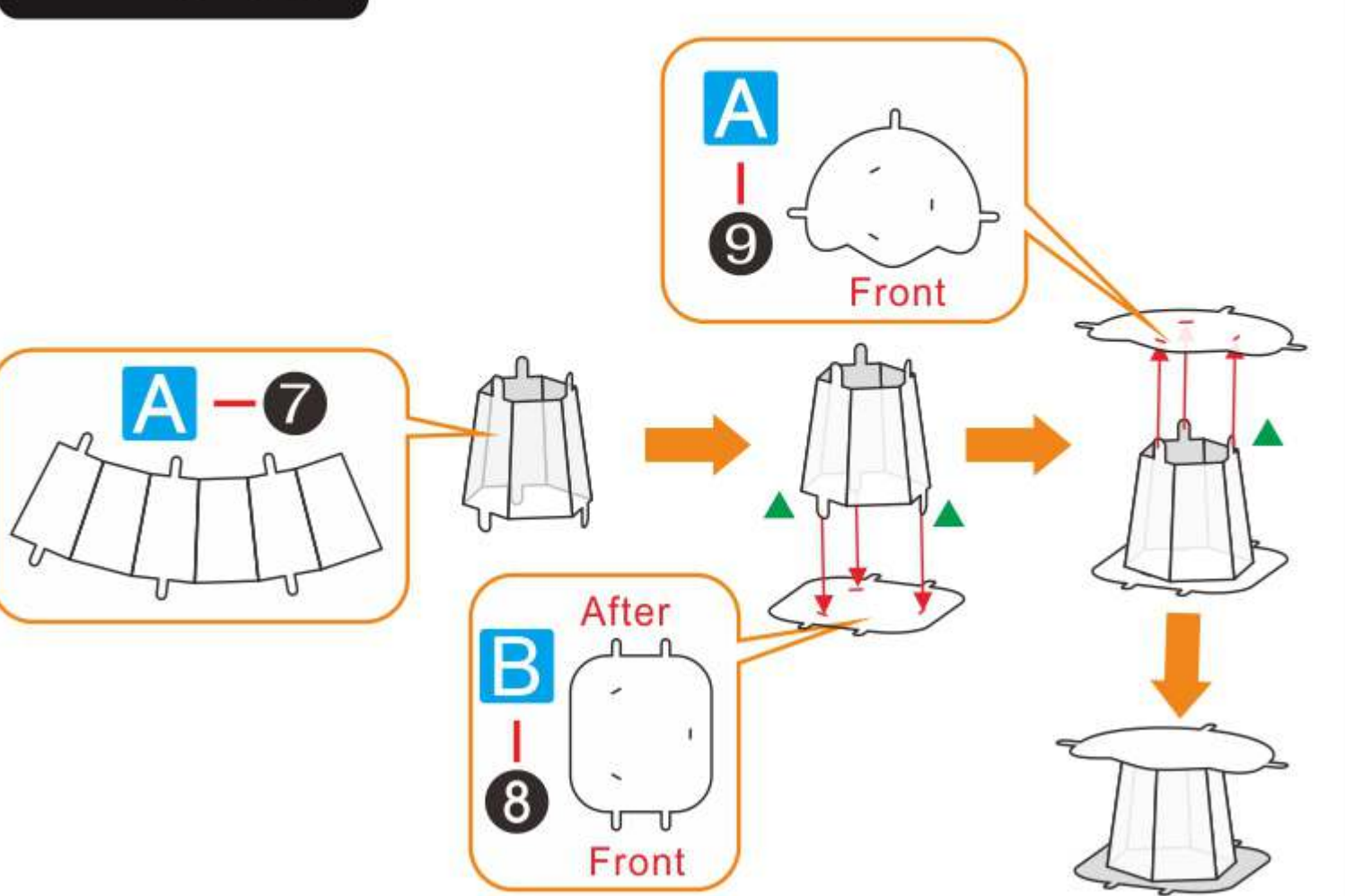
Step3



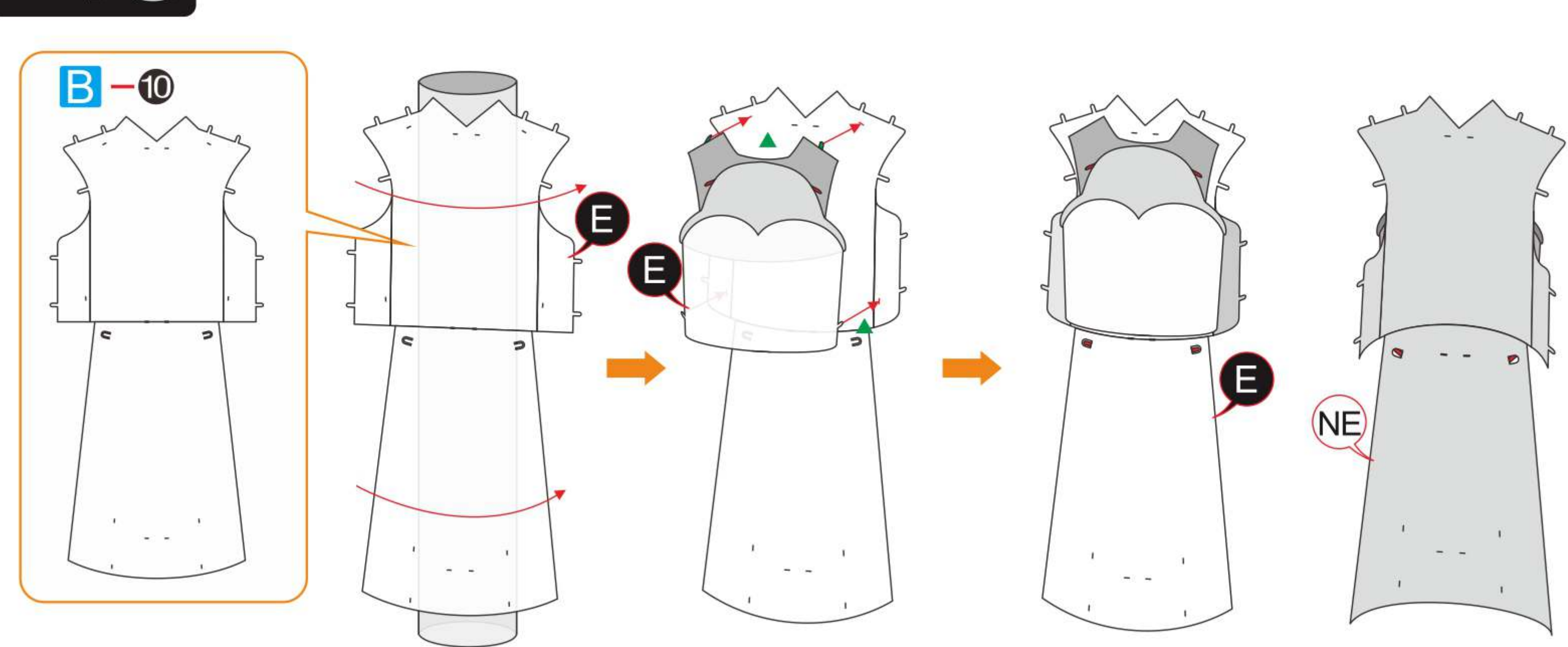
Step4



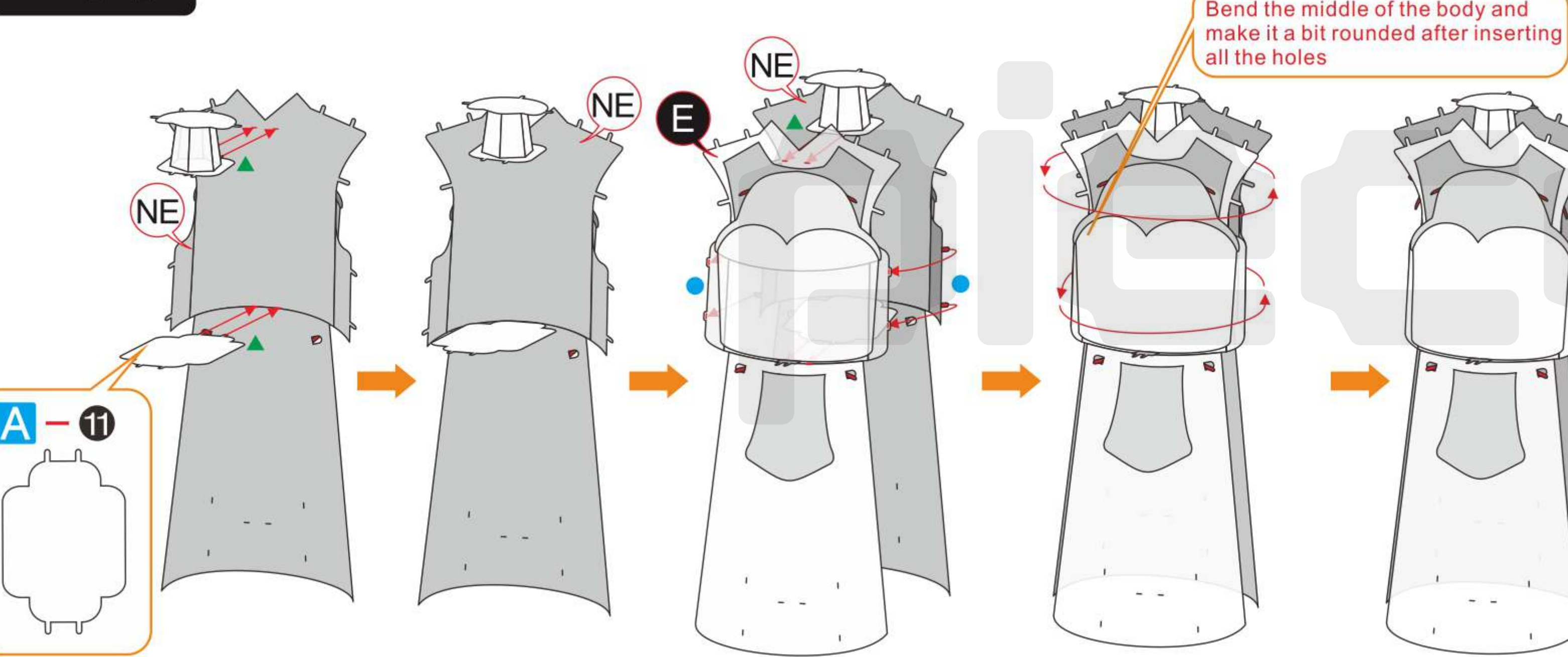
Step5



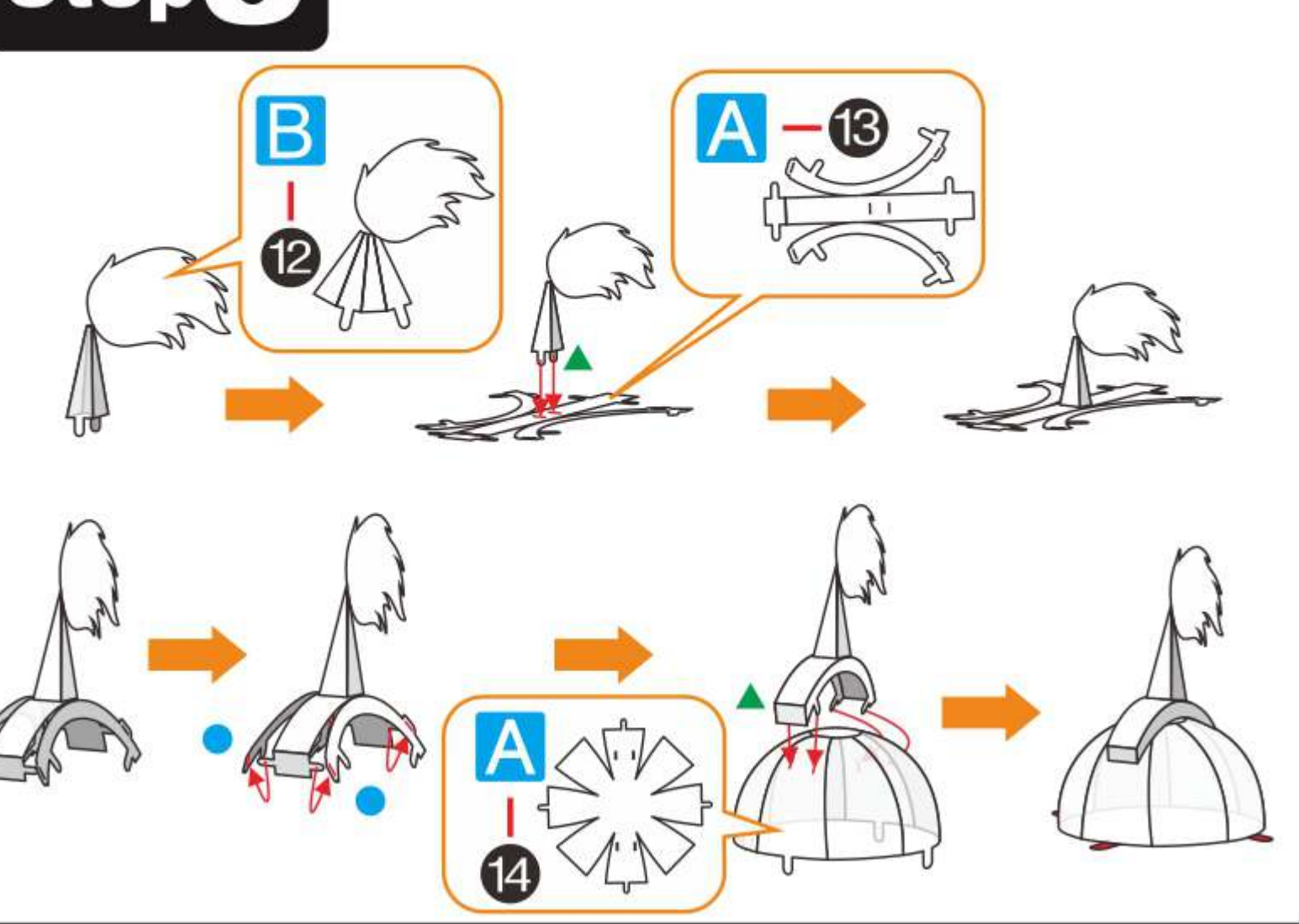
Step6



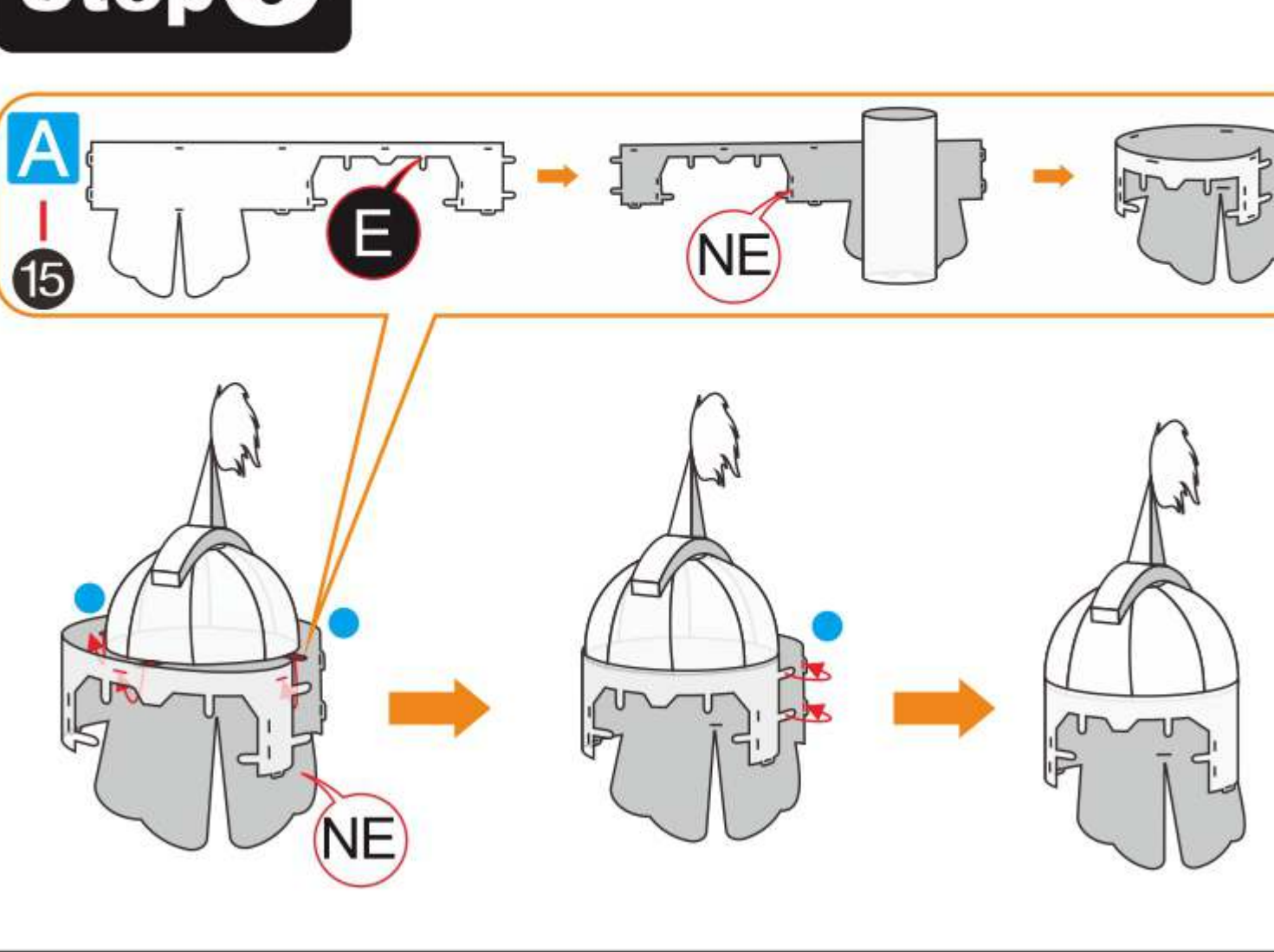
Step7



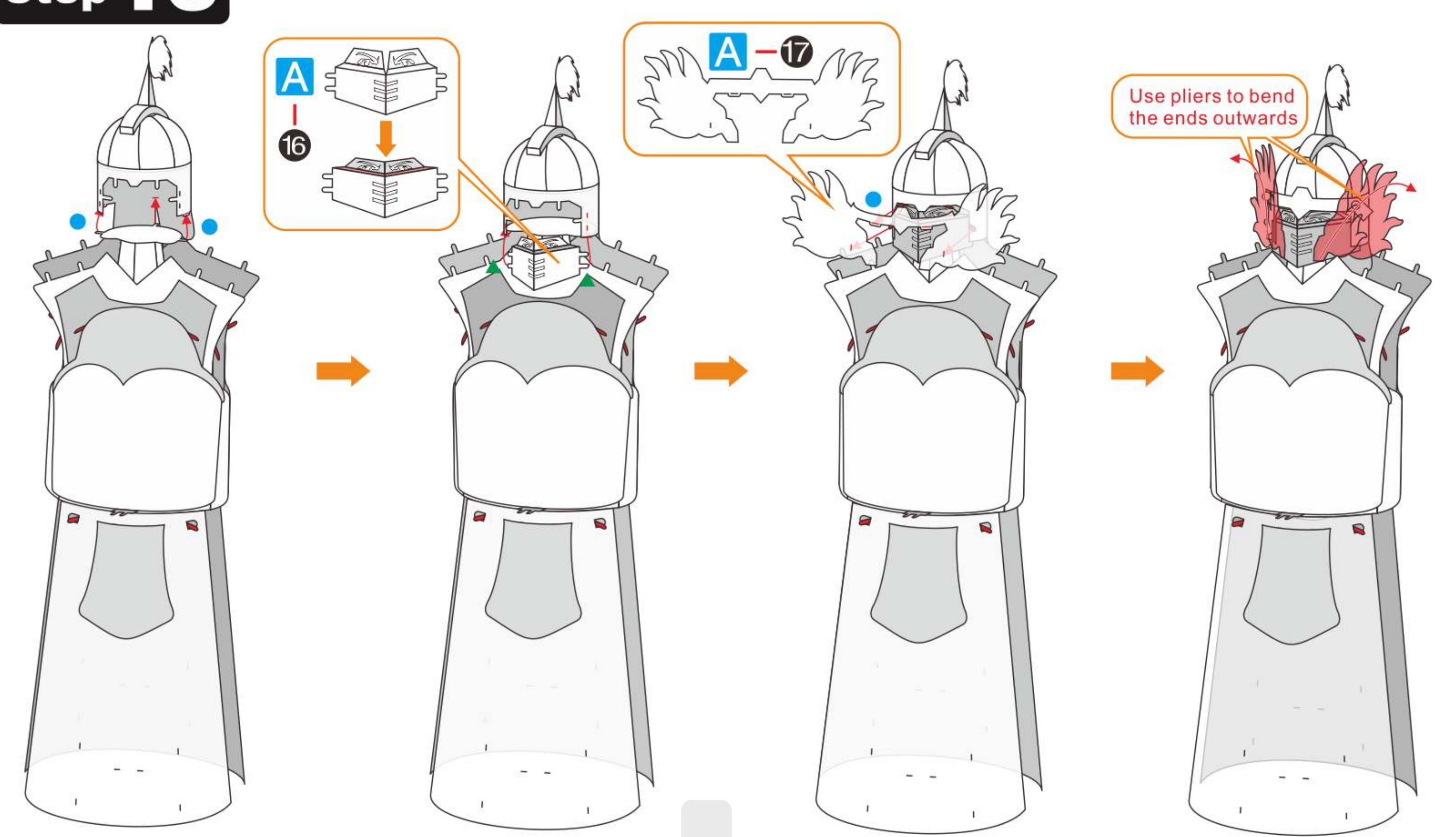
Step8



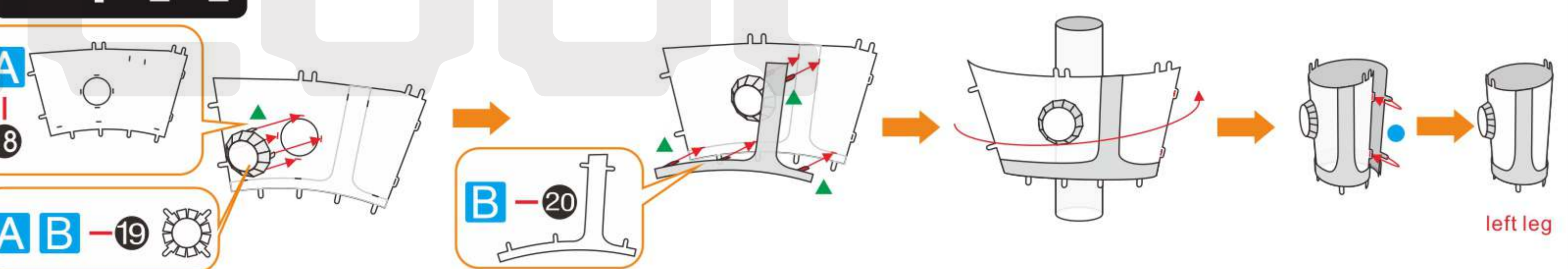
Step9



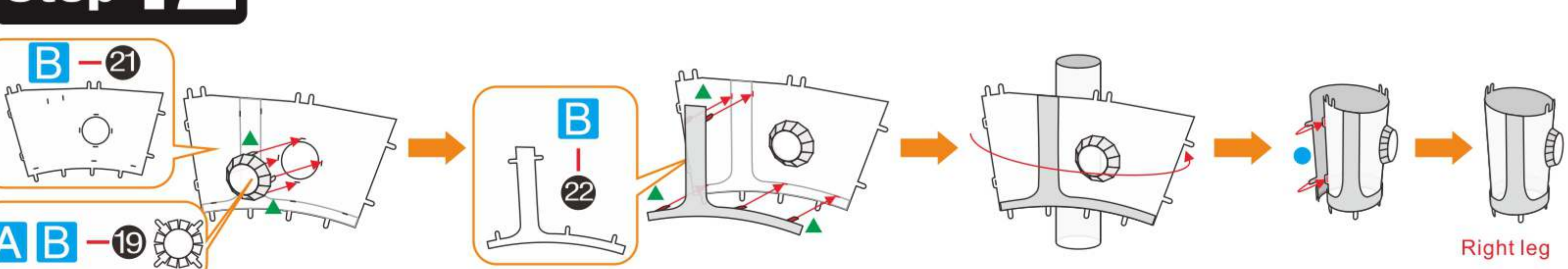
Step10



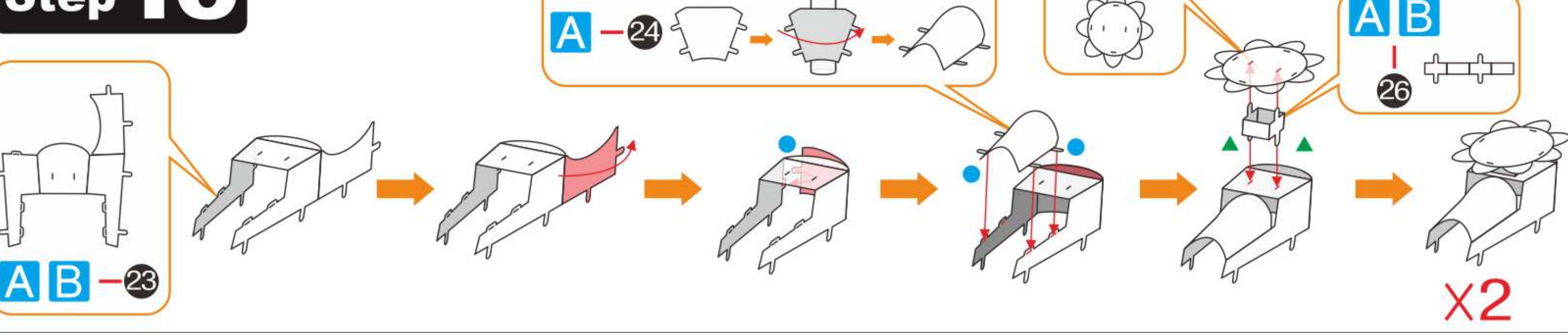
Step11



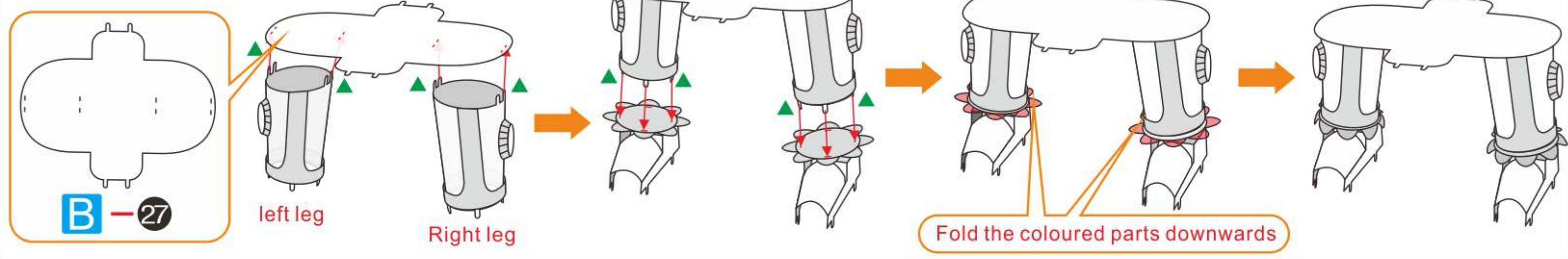
Step12



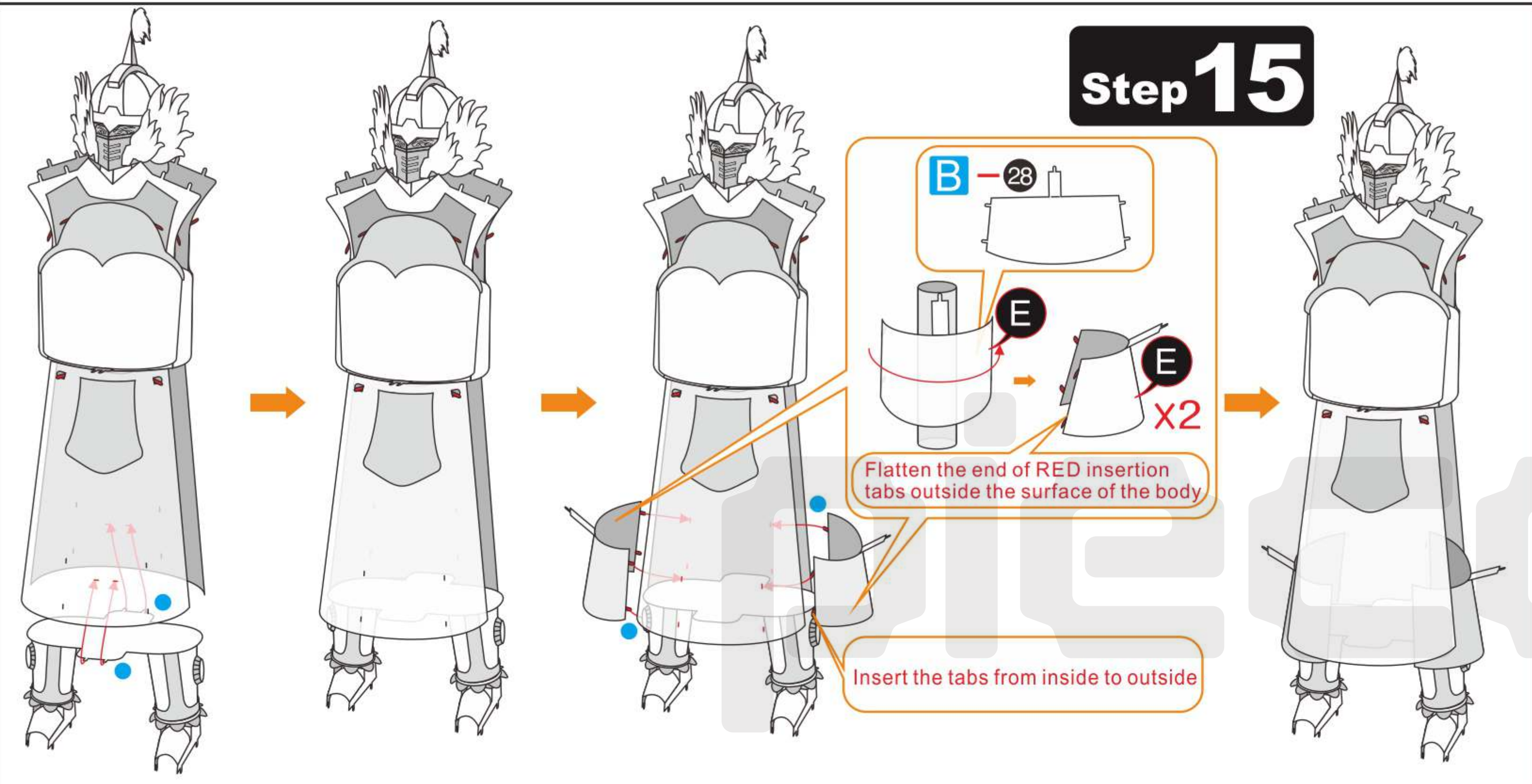
Step13



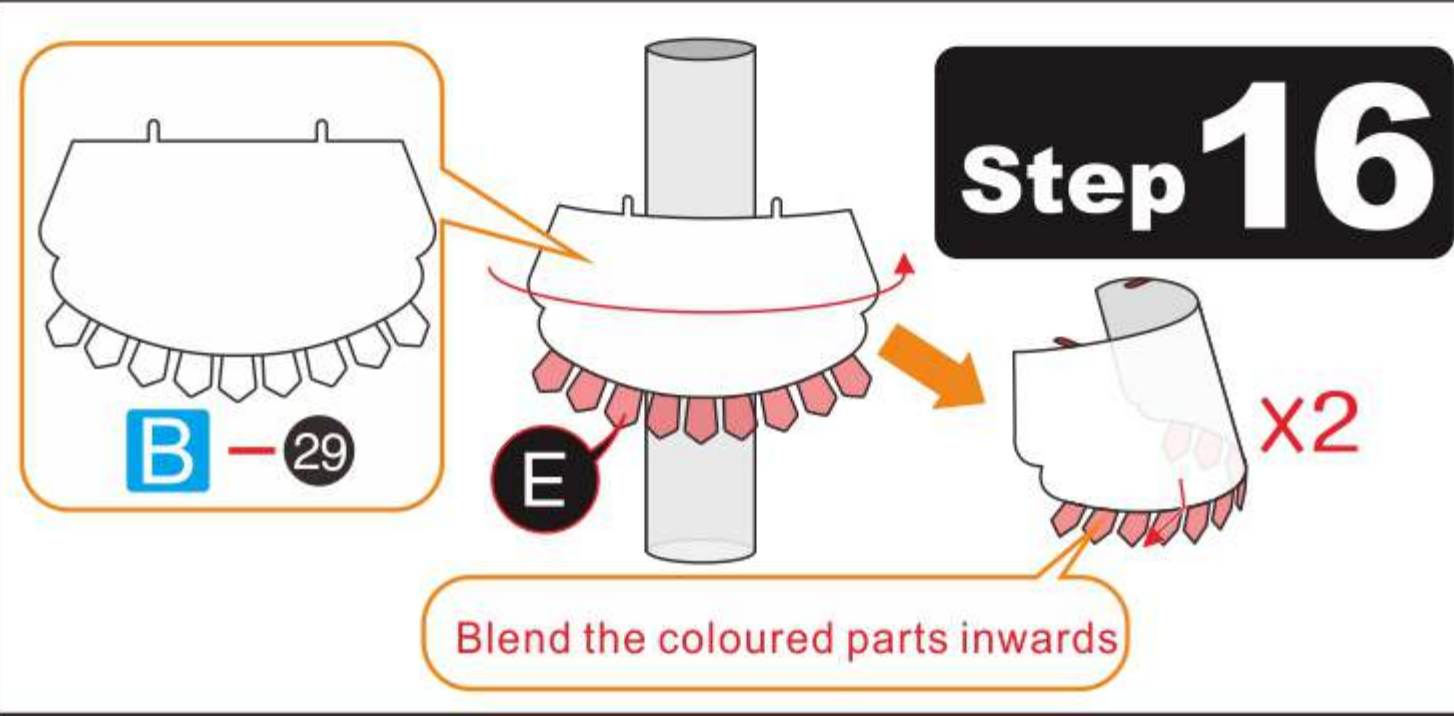
Step 14



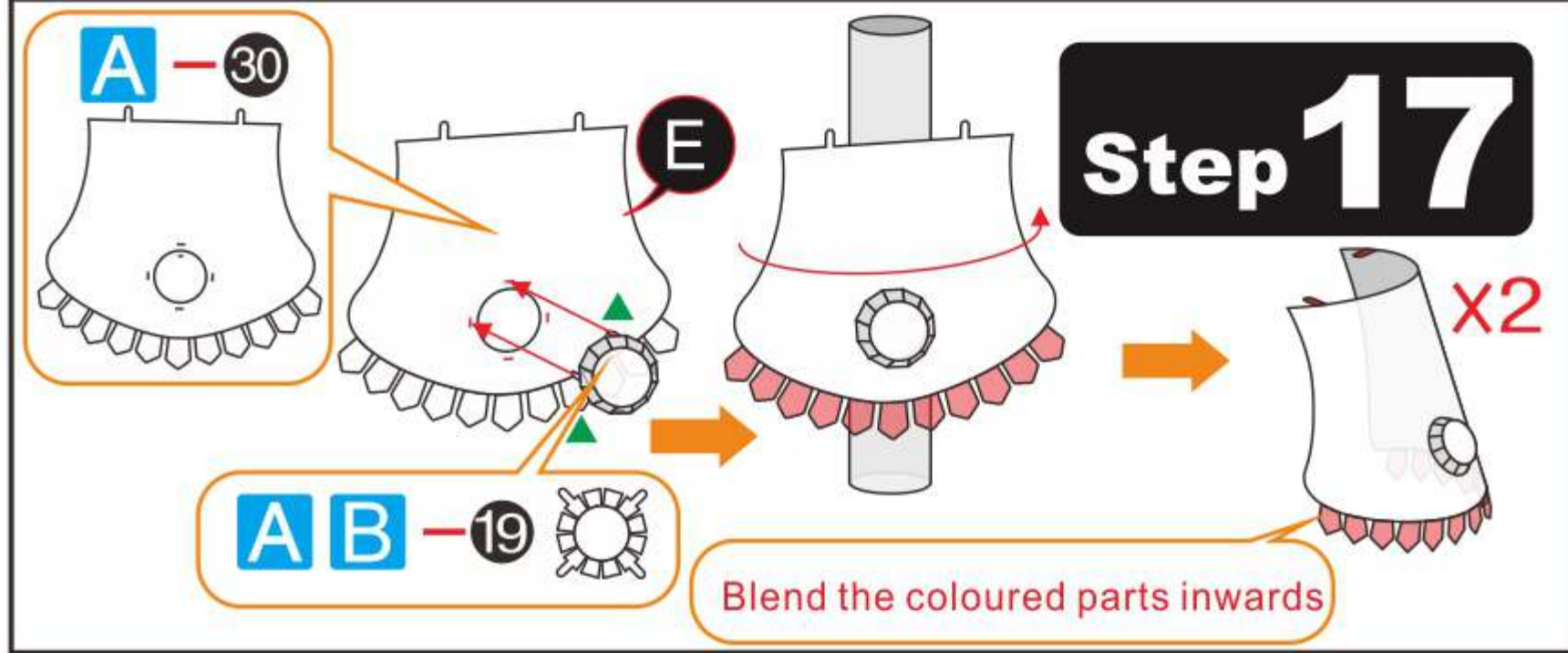
Step 15



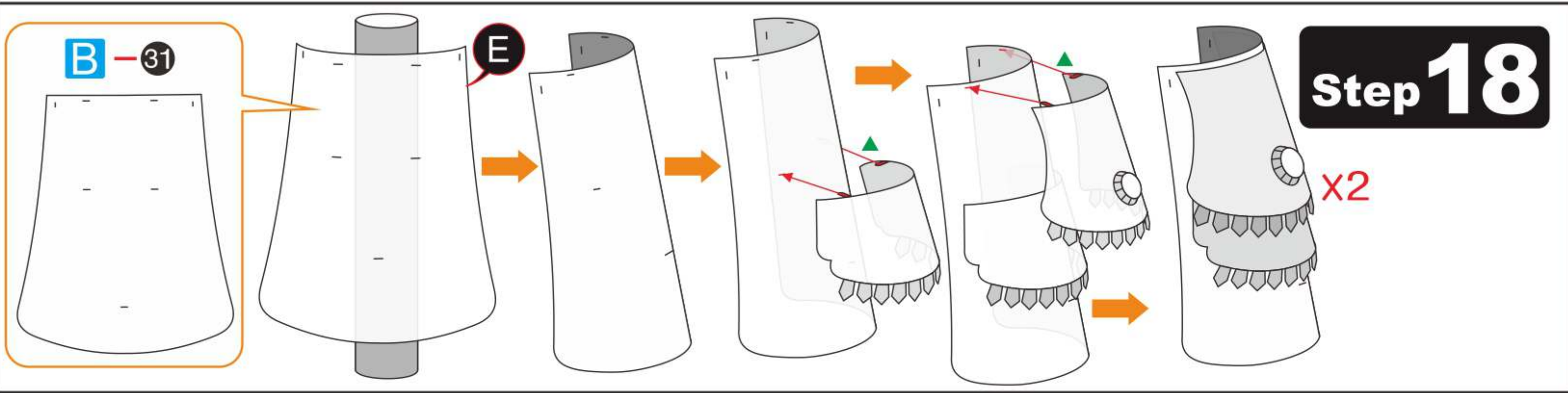
Step 16



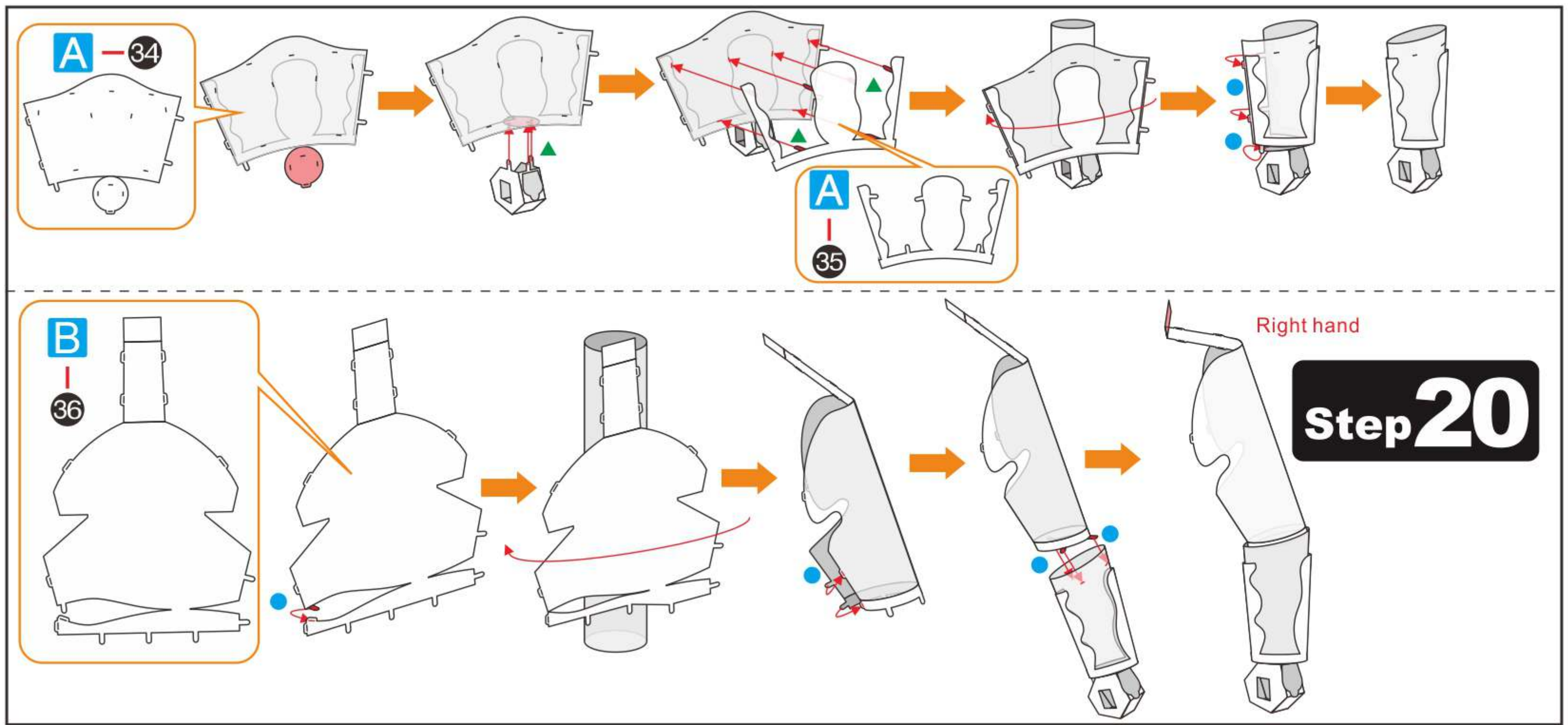
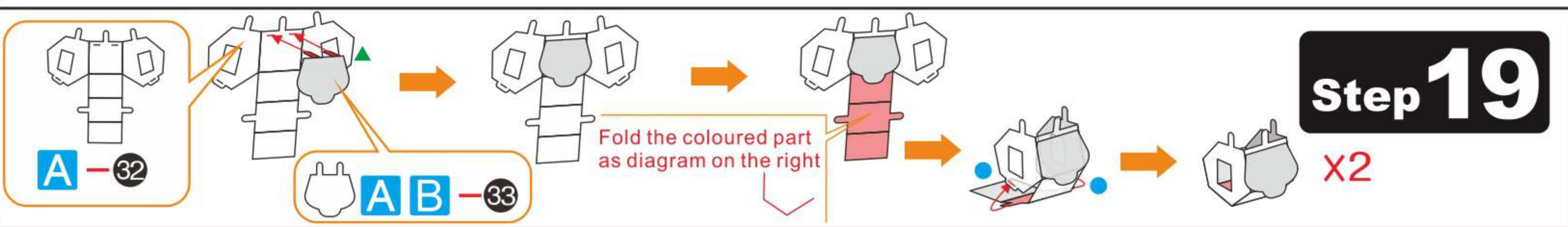
Step 17



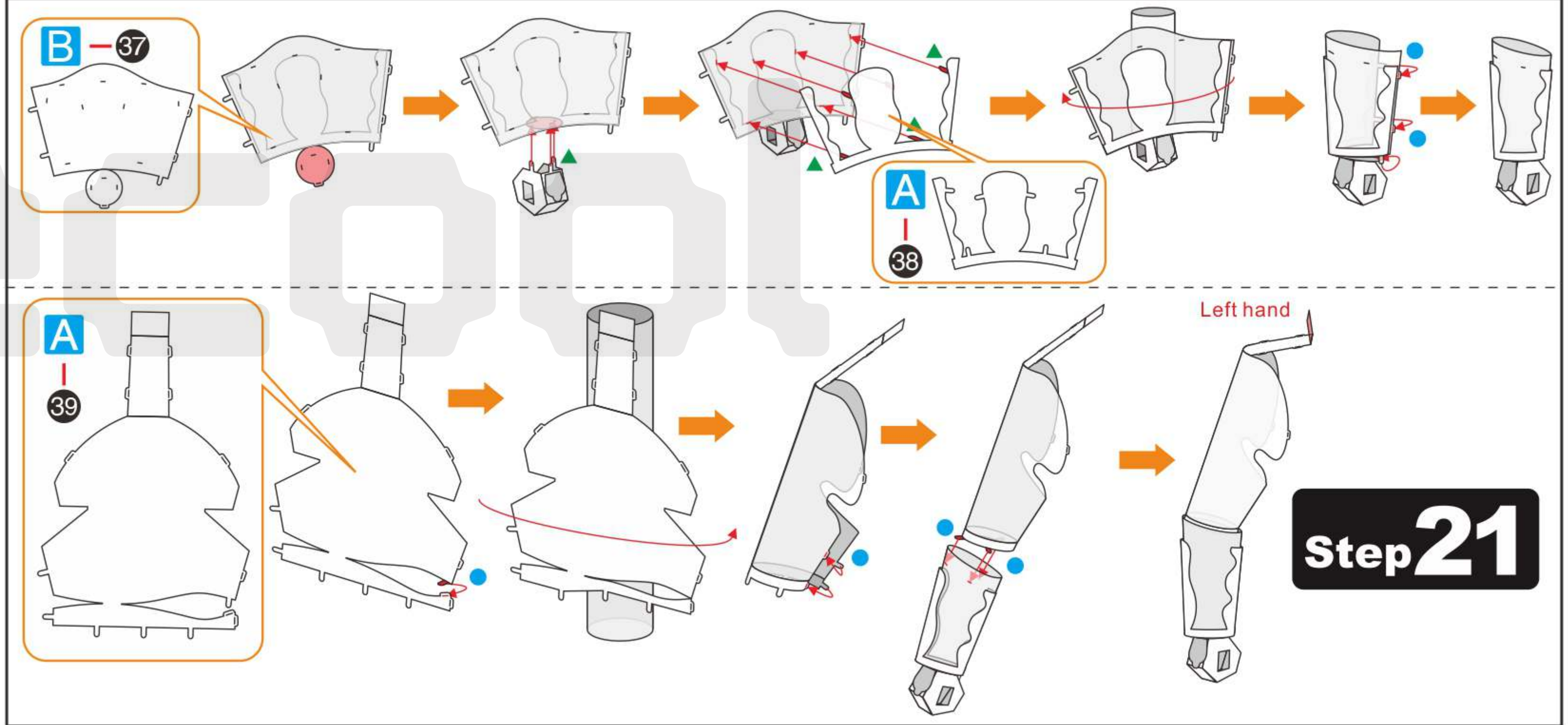
Step 18



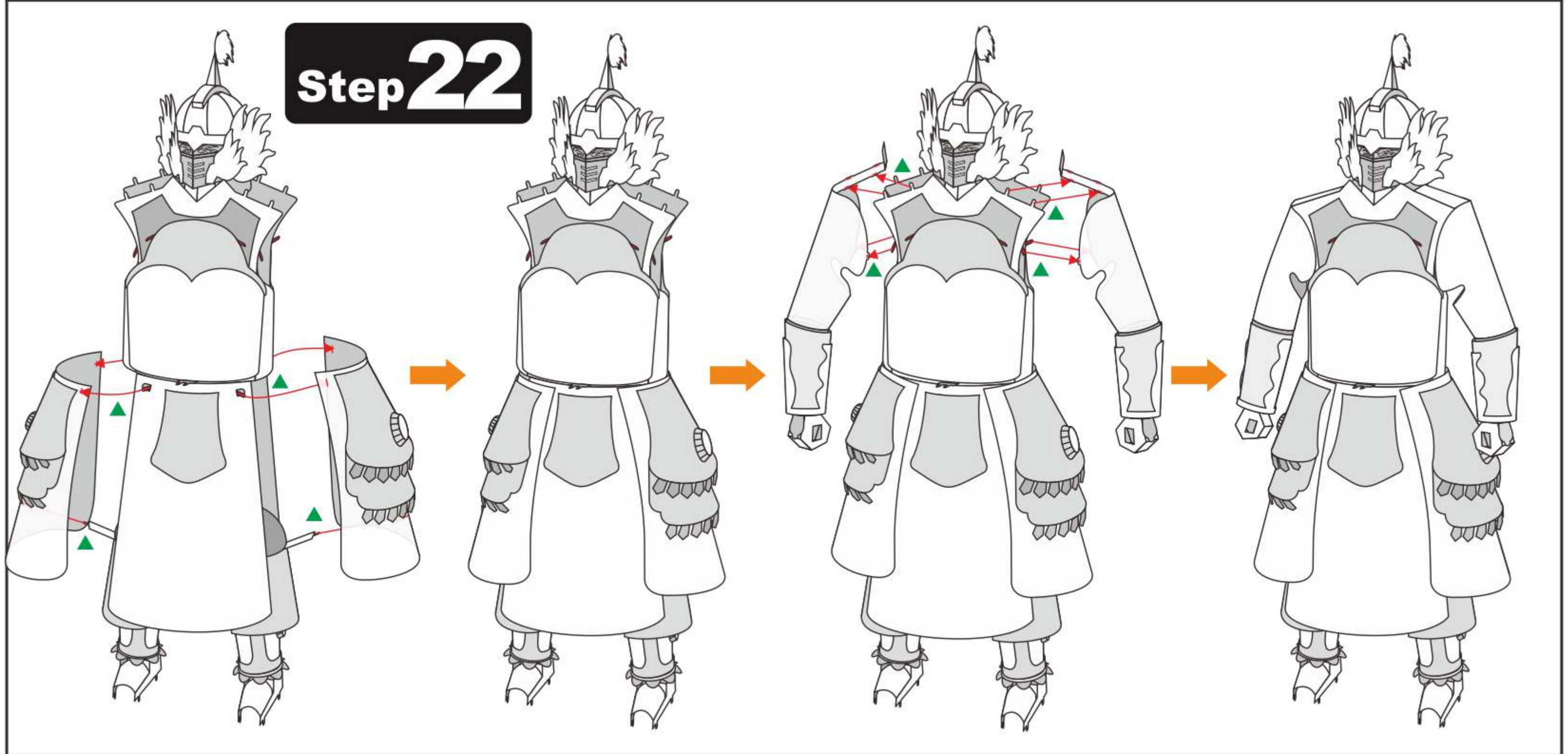
Step 19



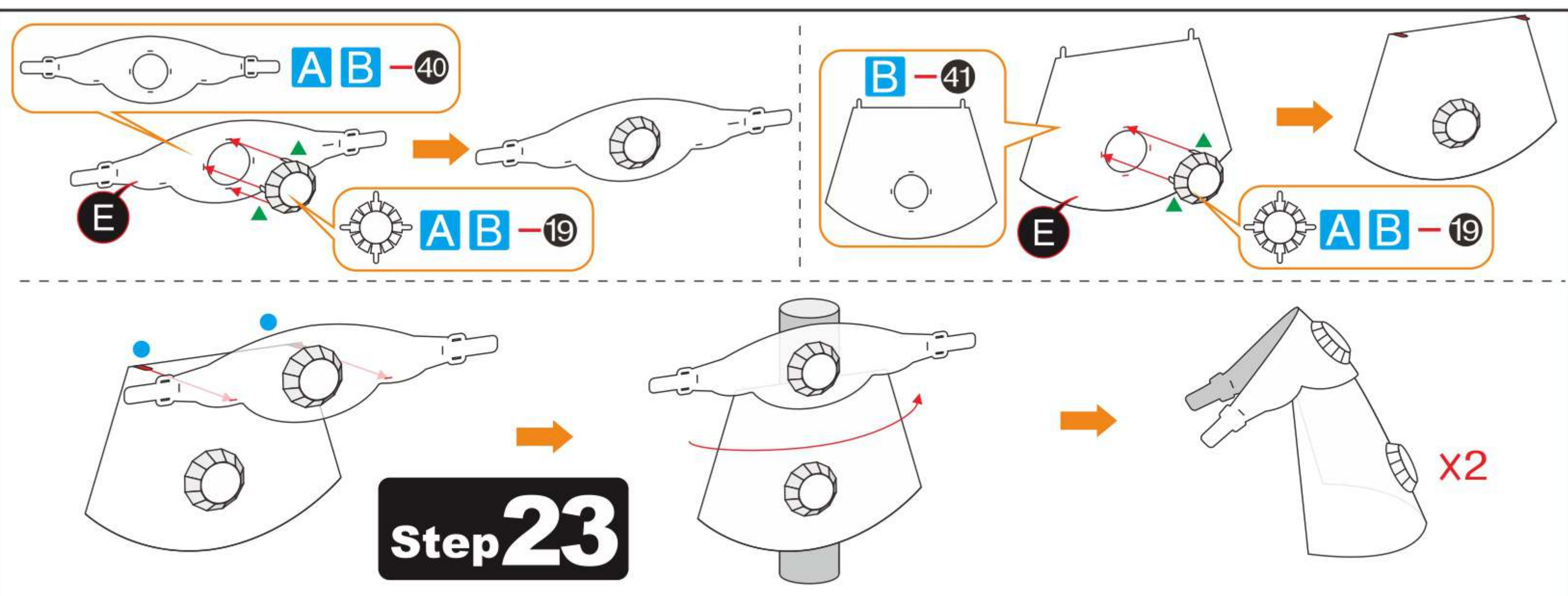
Step 20



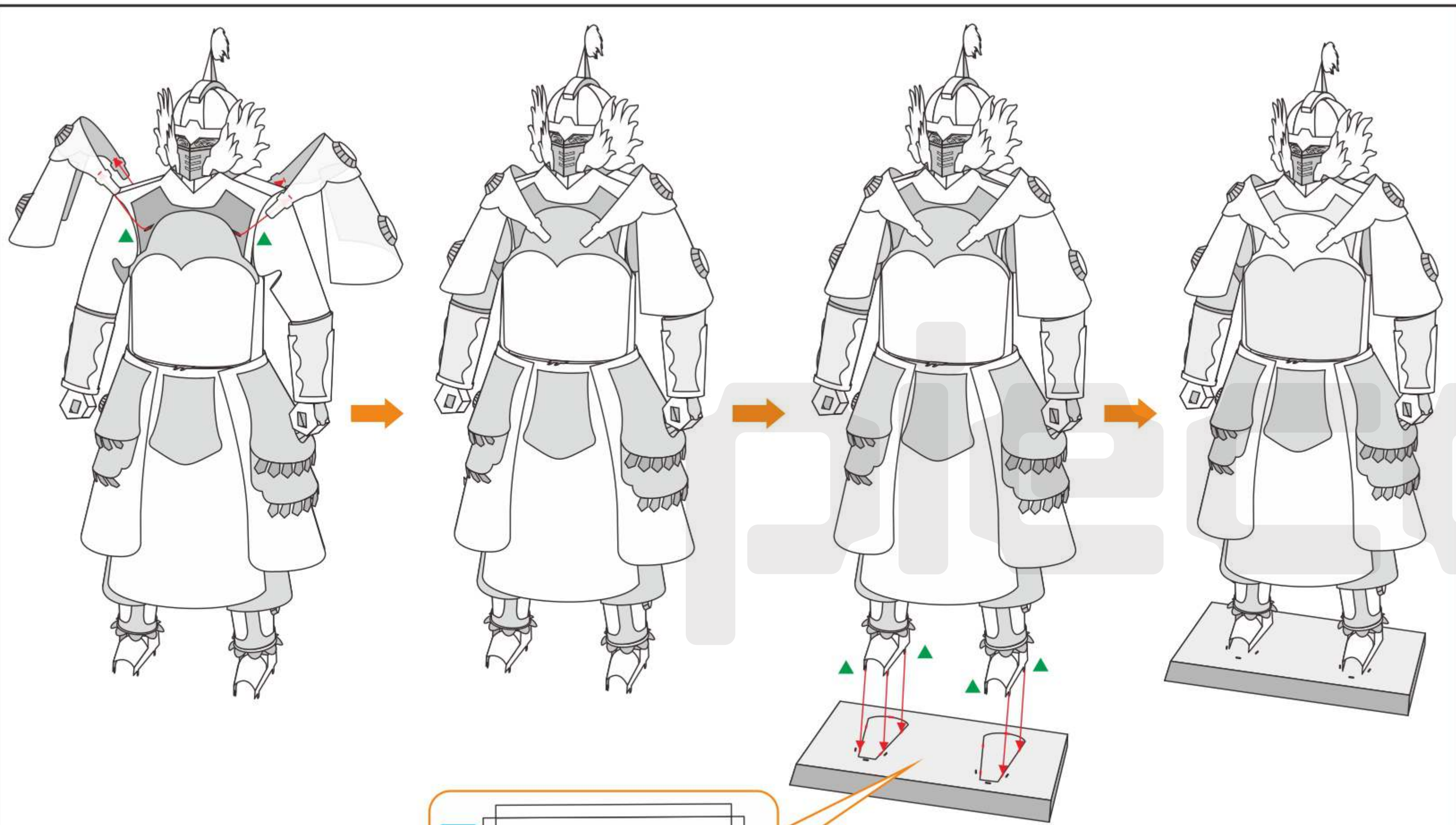
Step 21



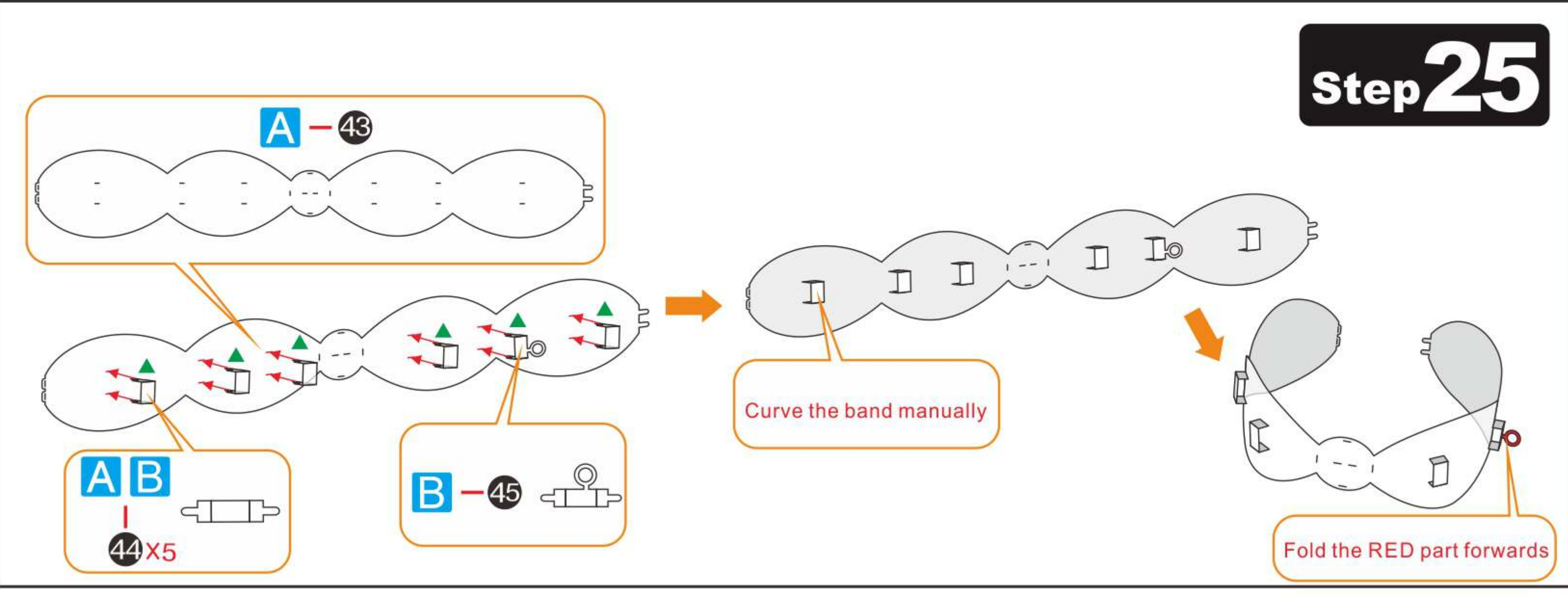
Step 22



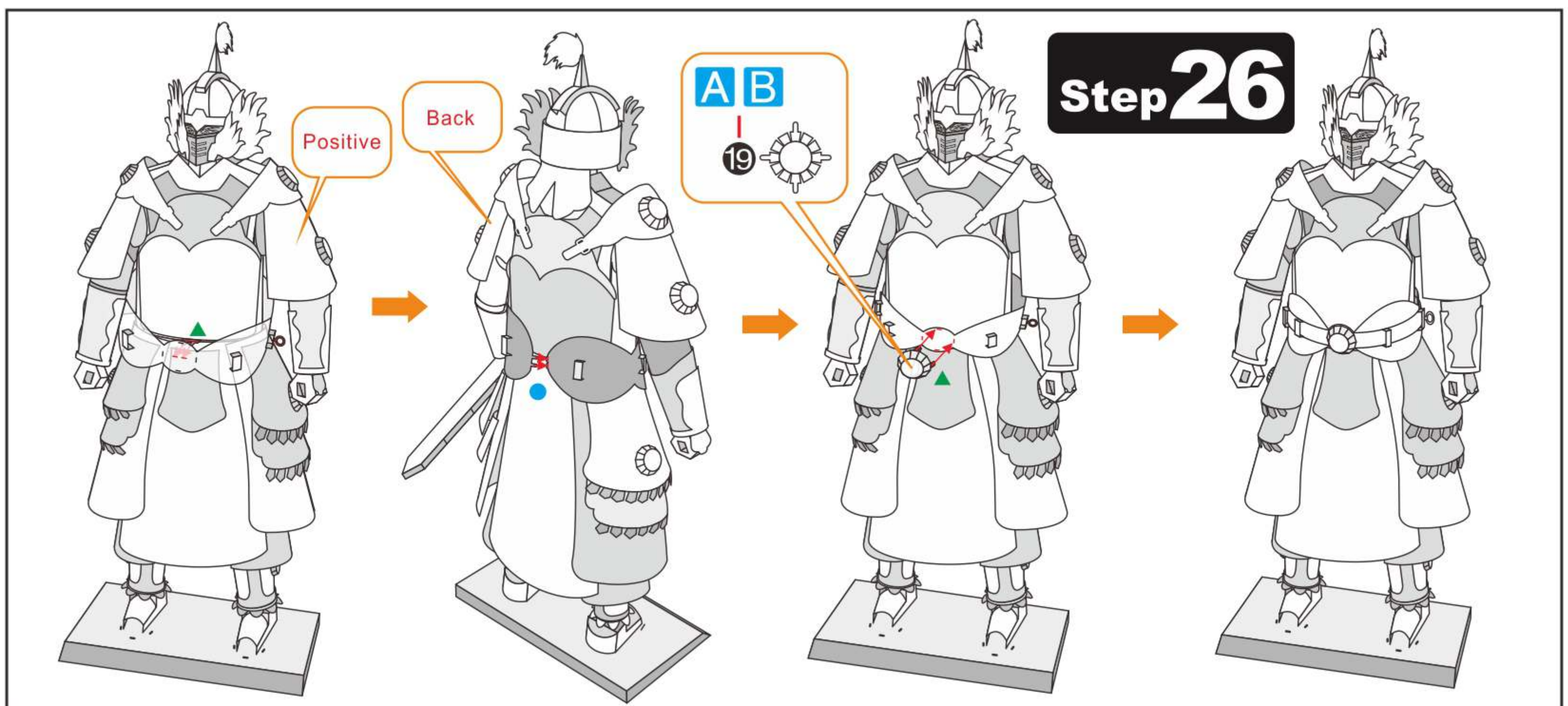
Step 23



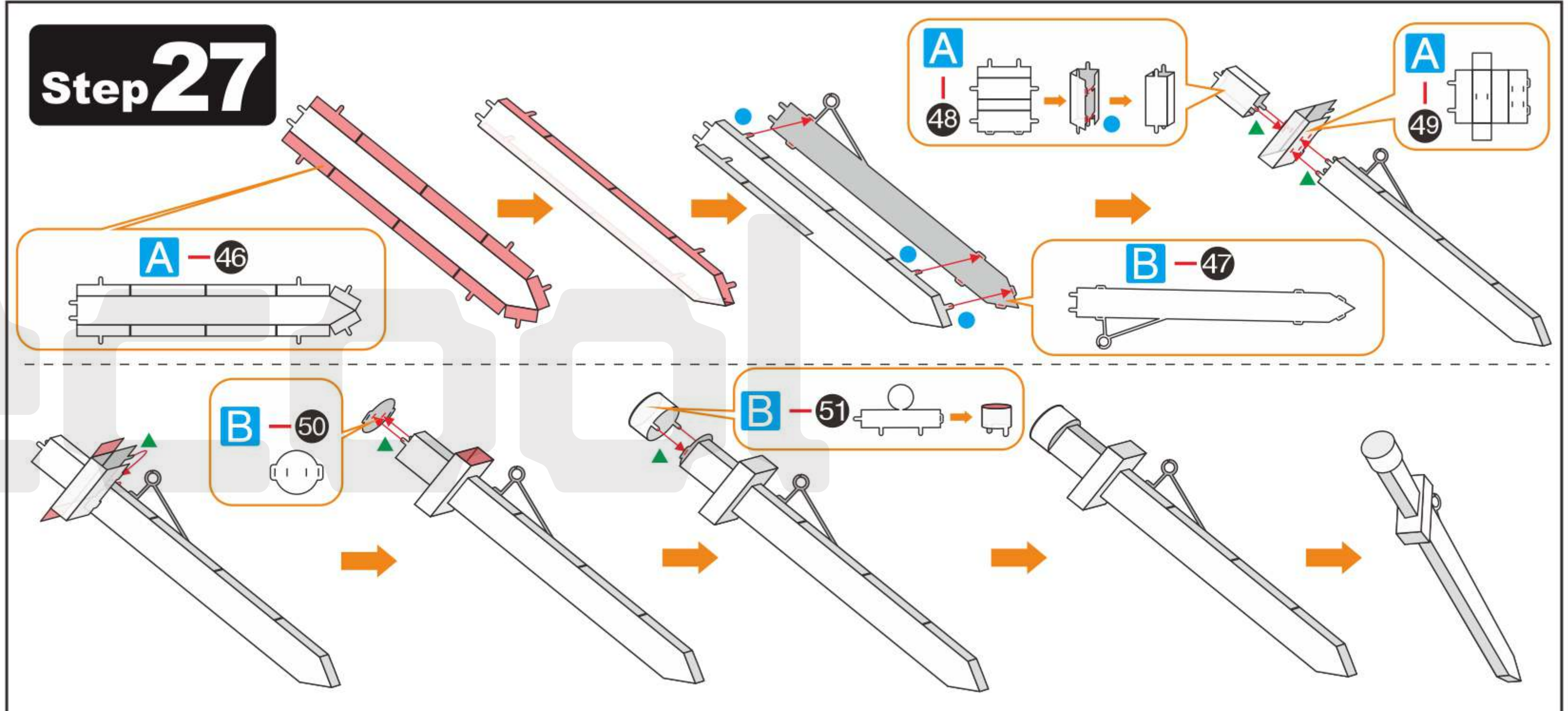
Step 24



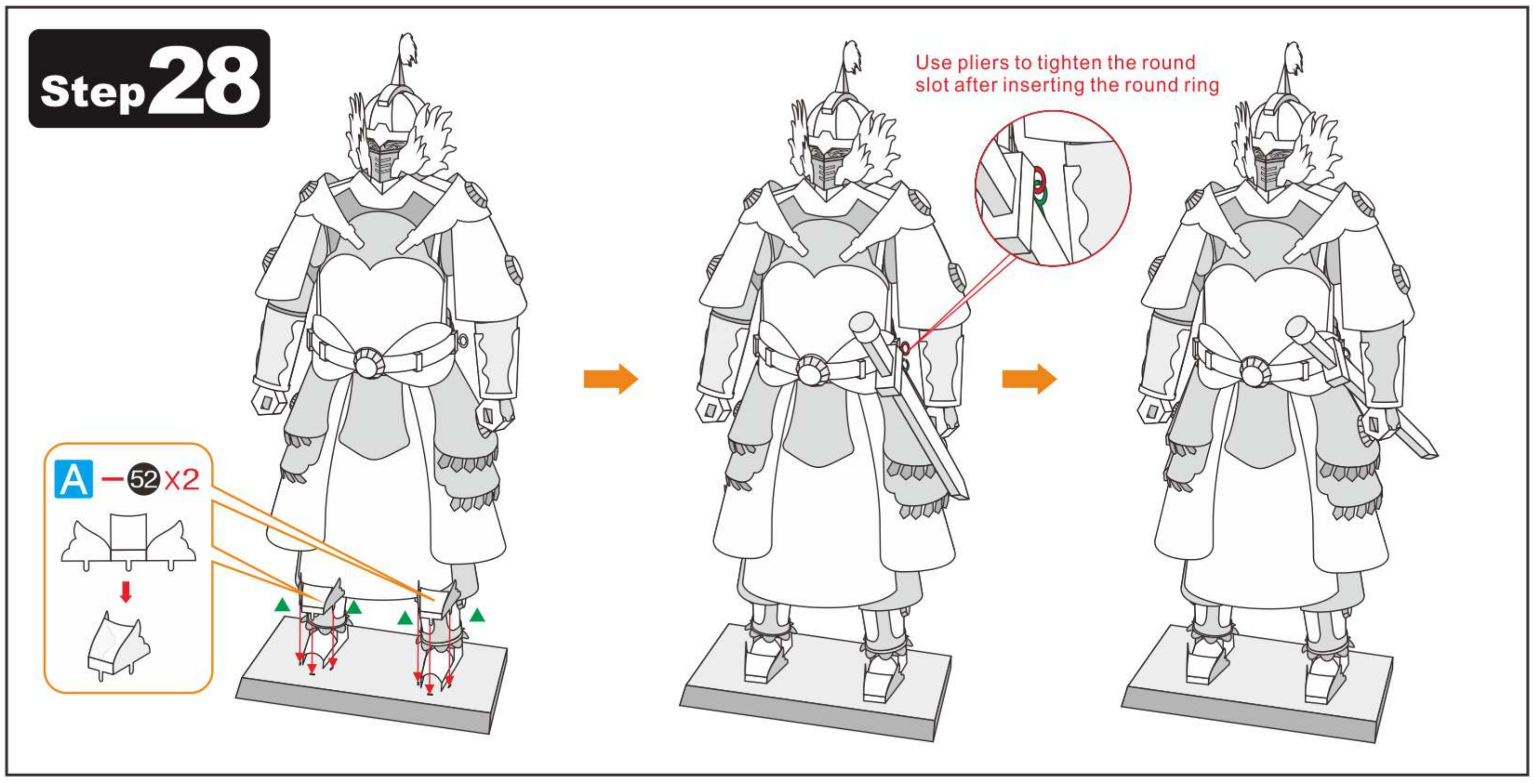
Step 25



Step 26



Step 27



Step 28