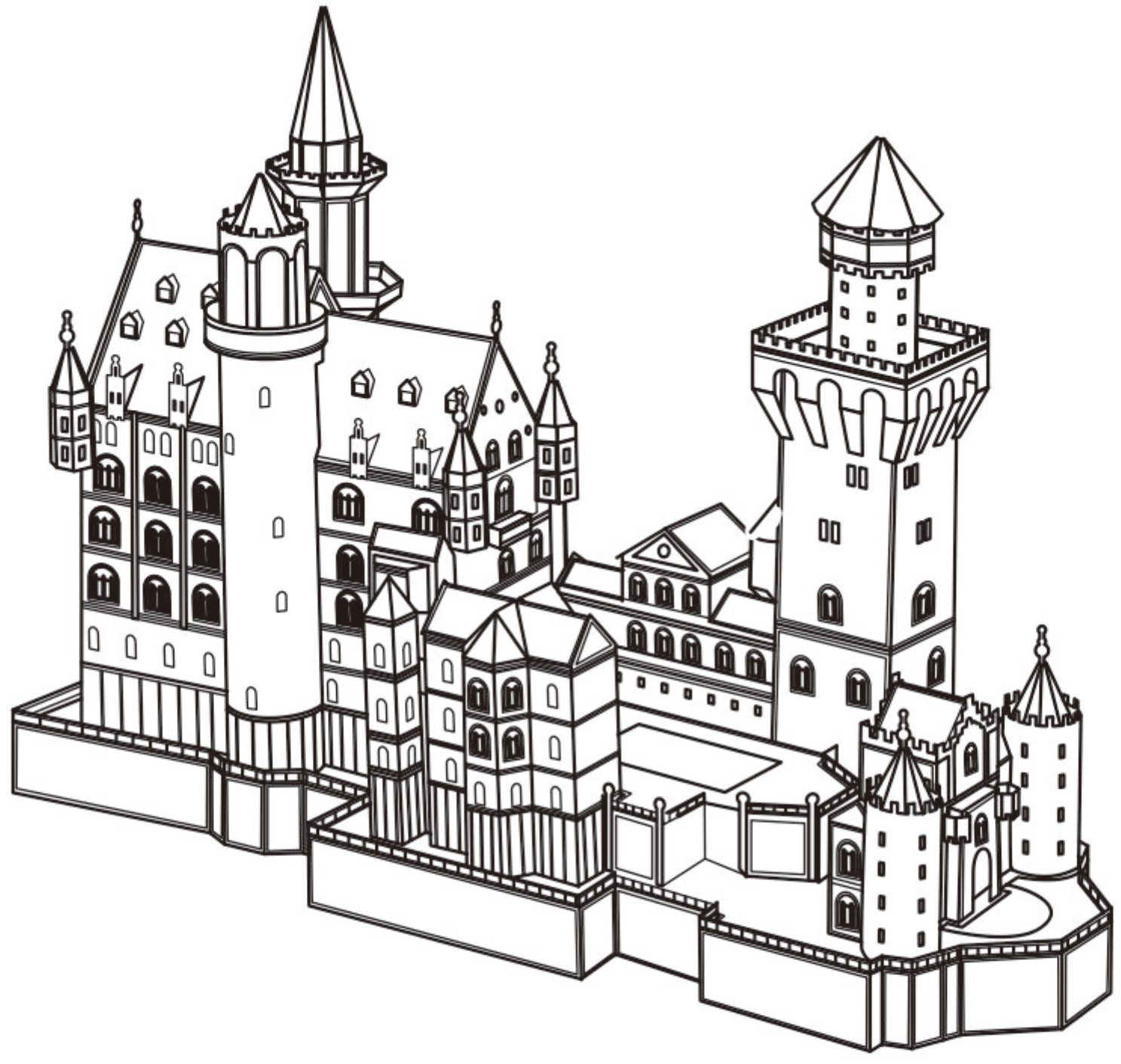


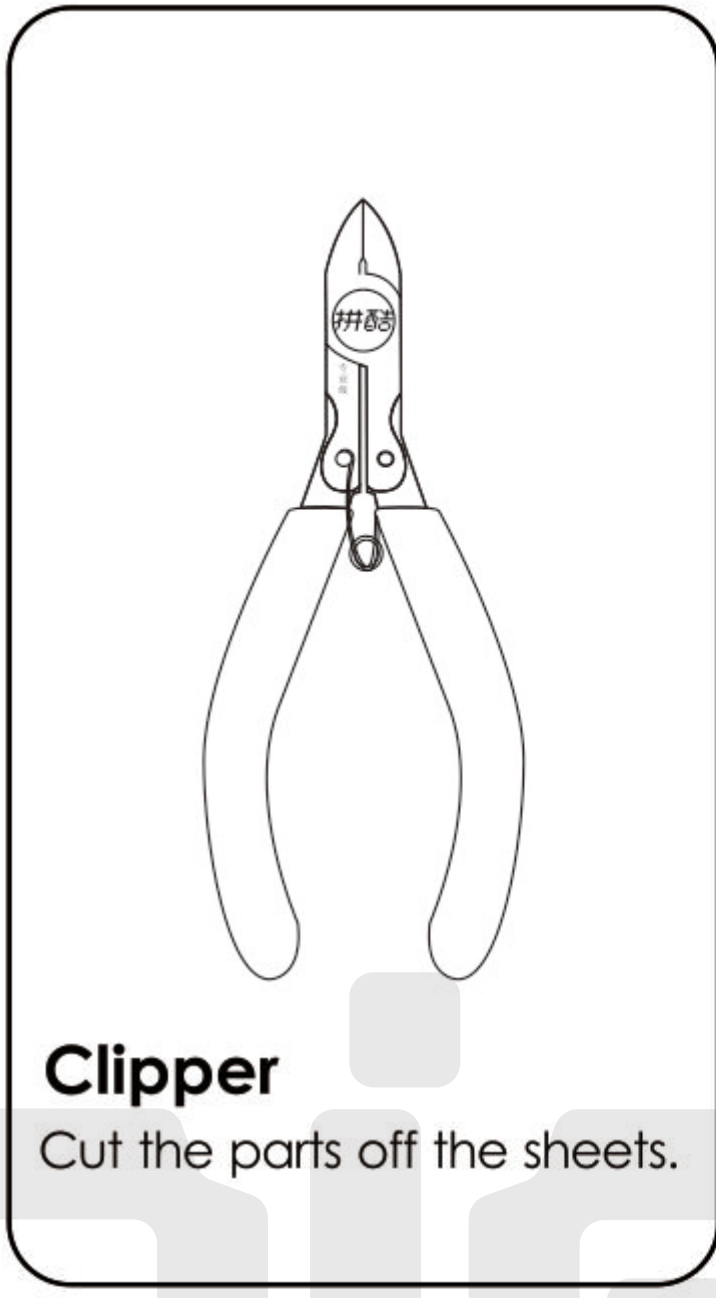
## NEUSCHWANSTEIN CASTLE HP013



CP-ASSY-HP013#-A1-20201026

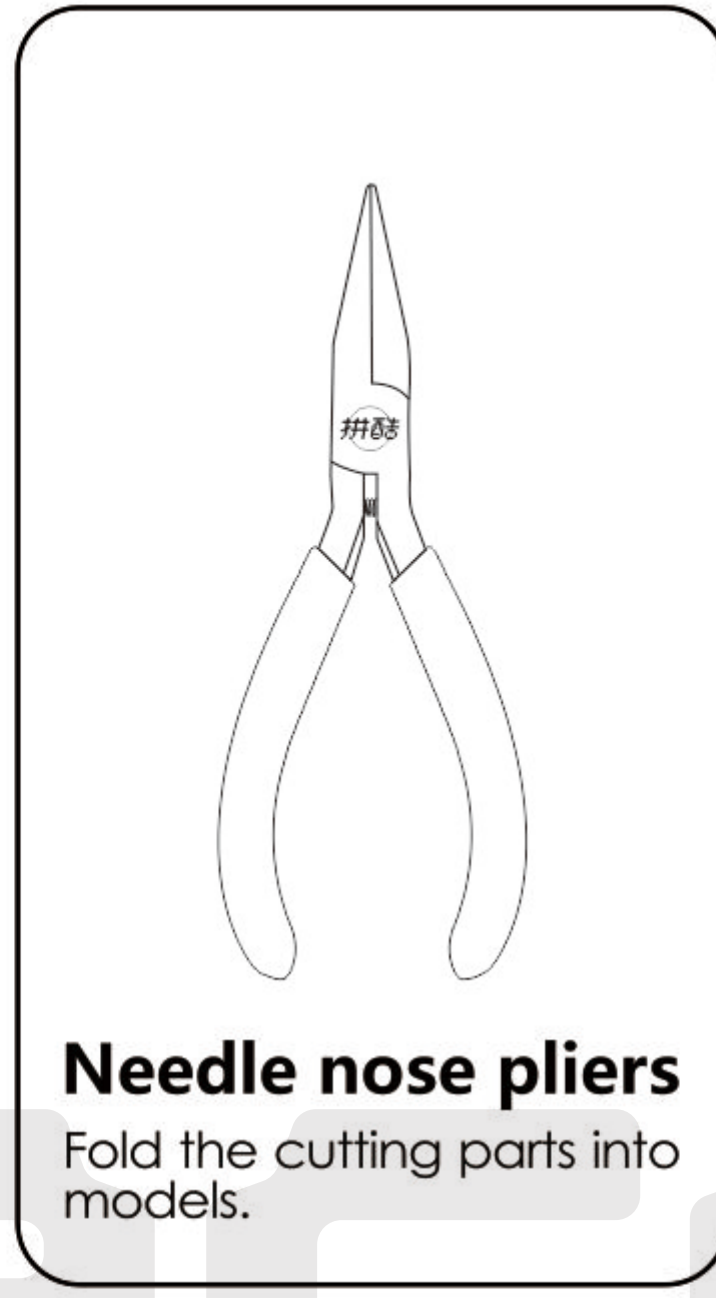
### Installation Reminder

- Prepare tools:



#### Clipper

Cut the parts off the sheets.



#### Needle nose pliers

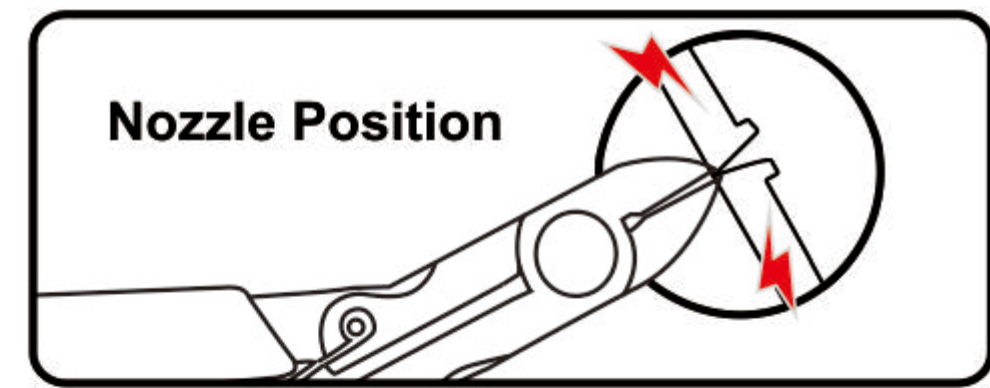
Fold the cutting parts into models.

It is recommended to use piececool authentic assembly tools to build or fix the design. It is tailor made for the metal pieces and user friendly.

Please handle the metal trim carefully to prevent scratches.

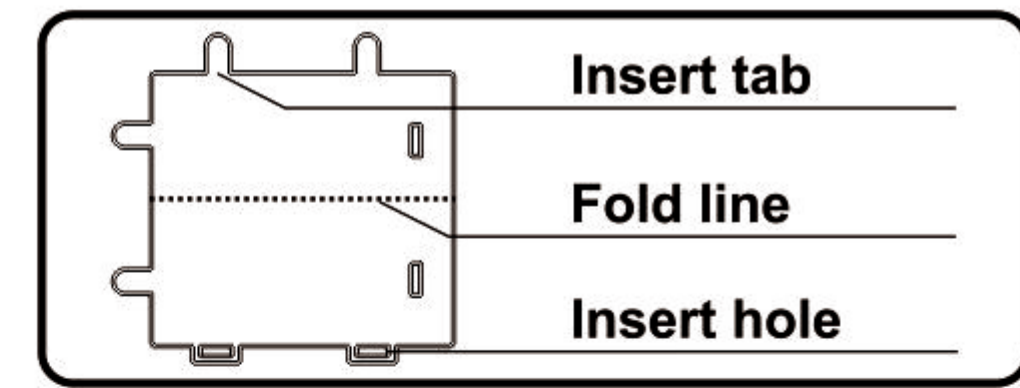
- Installation Method:

#### a. Remove the parts



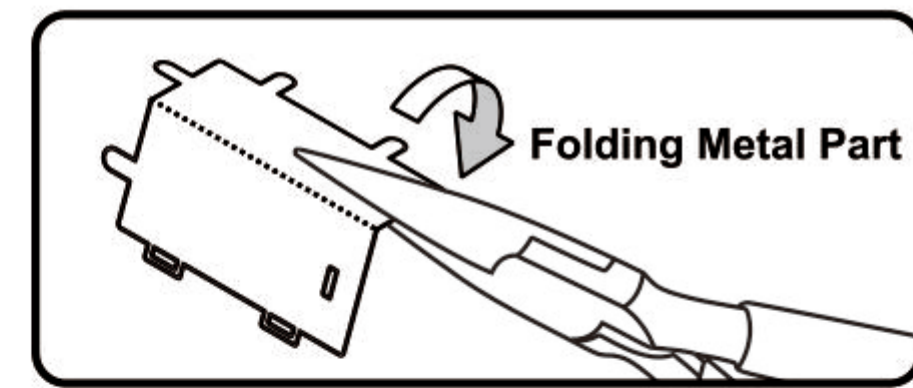
Please use the clipper to cut the nozzle position and remove the parts.

#### b. Identify the parts



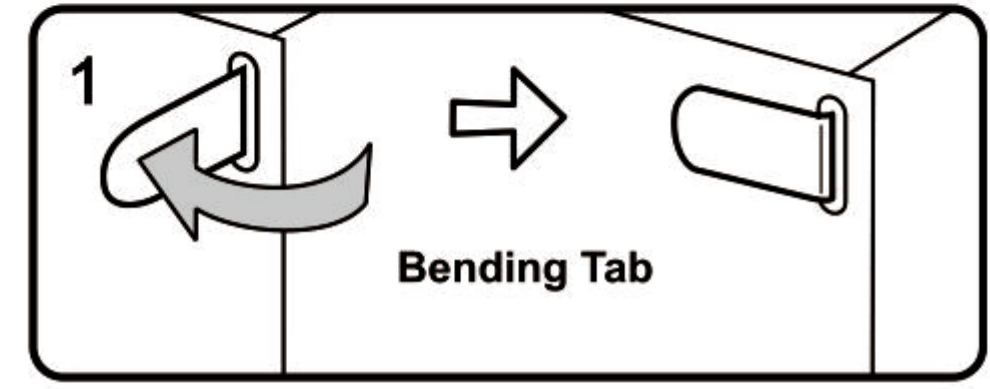
Identify the insert tab, fold line and the insert hole.

#### c. Folding the parts

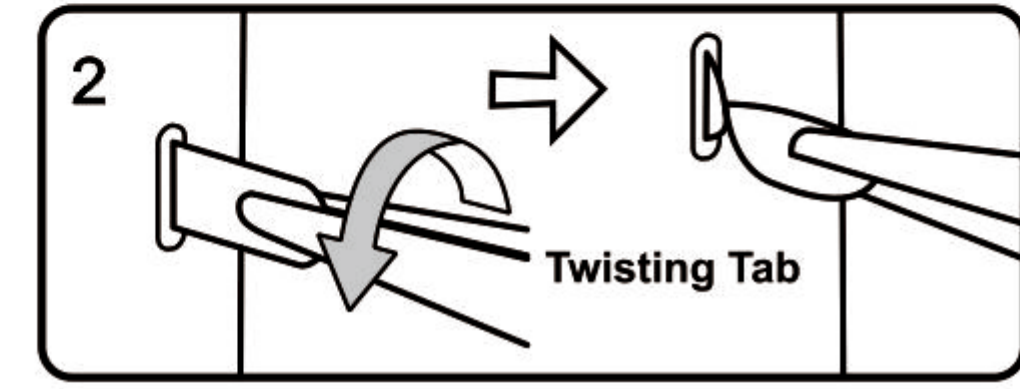


Please use the Needle nose pliers to fold the cutting parts into models.

#### d. Retaining the parts



Insert the hole, bending tab with angle 90°



Insert the hole, twisting tab with angle 90°

- Attention:

Engraved / Color side

Non-engraved / Silver side

Attention Point

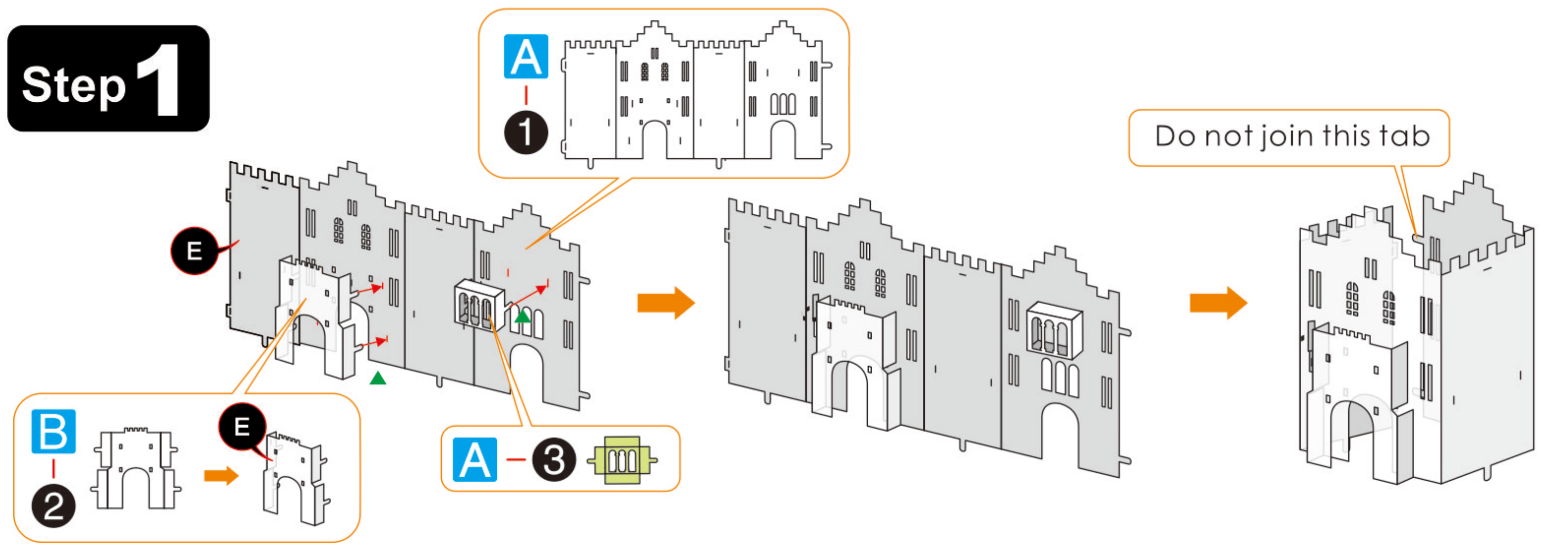
Keep the parts symmetrical

When cutting metal parts, please do not cut the "insert tab" as "nozzle position". Only cut the parts of the current step when cutting the parts. Do not cut all the parts at one time to avoid loss.

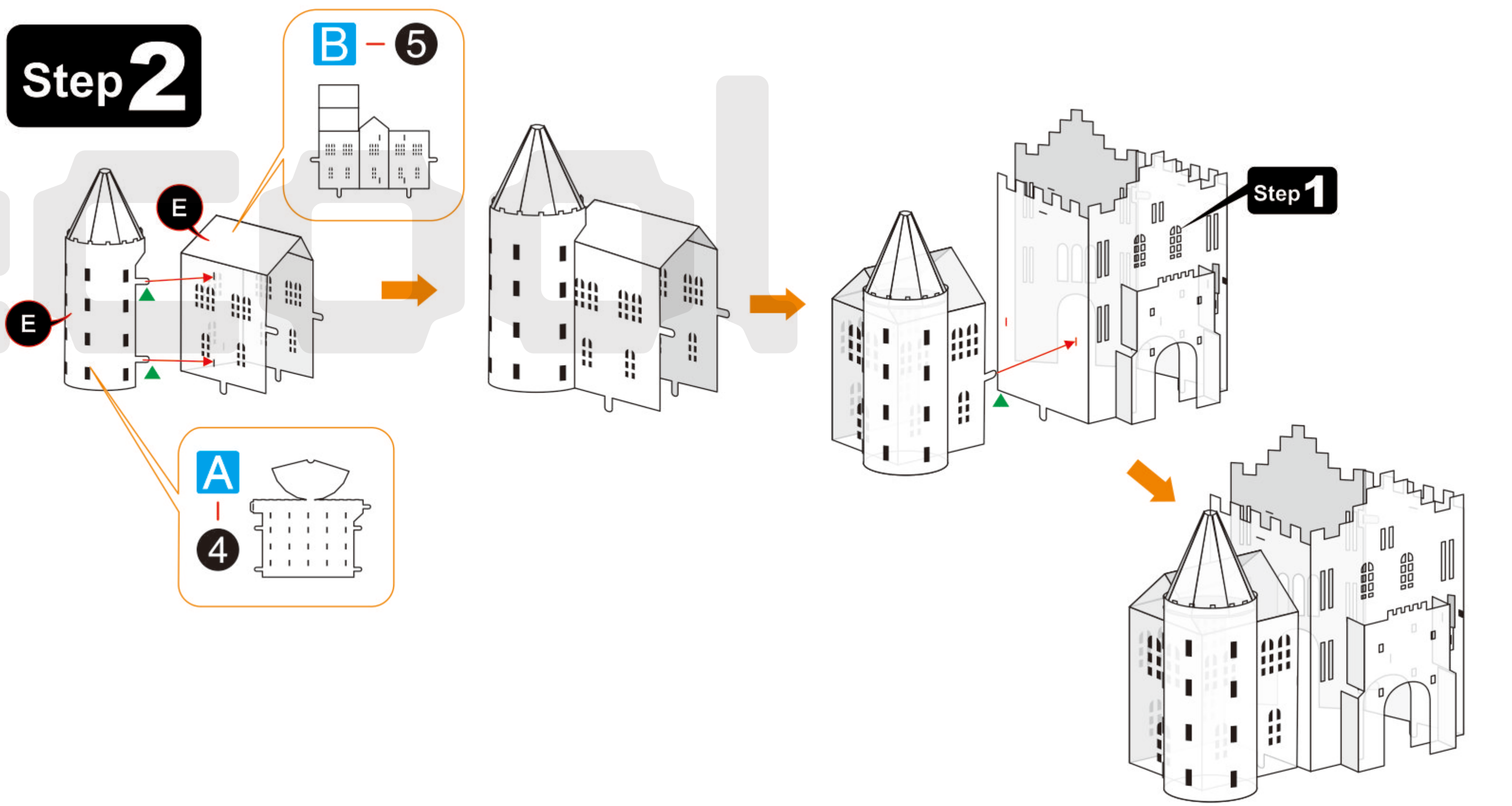
When encountering the parts of the folding line, please pay attention to the front and back of the metal sheet and the direction of the folding. According to the direction indicated in the instruction, cut lightly and fold slowly. It is best to fold it once. Do not fold it repeatedly to avoid damage to the parts.

### Assembly Guide

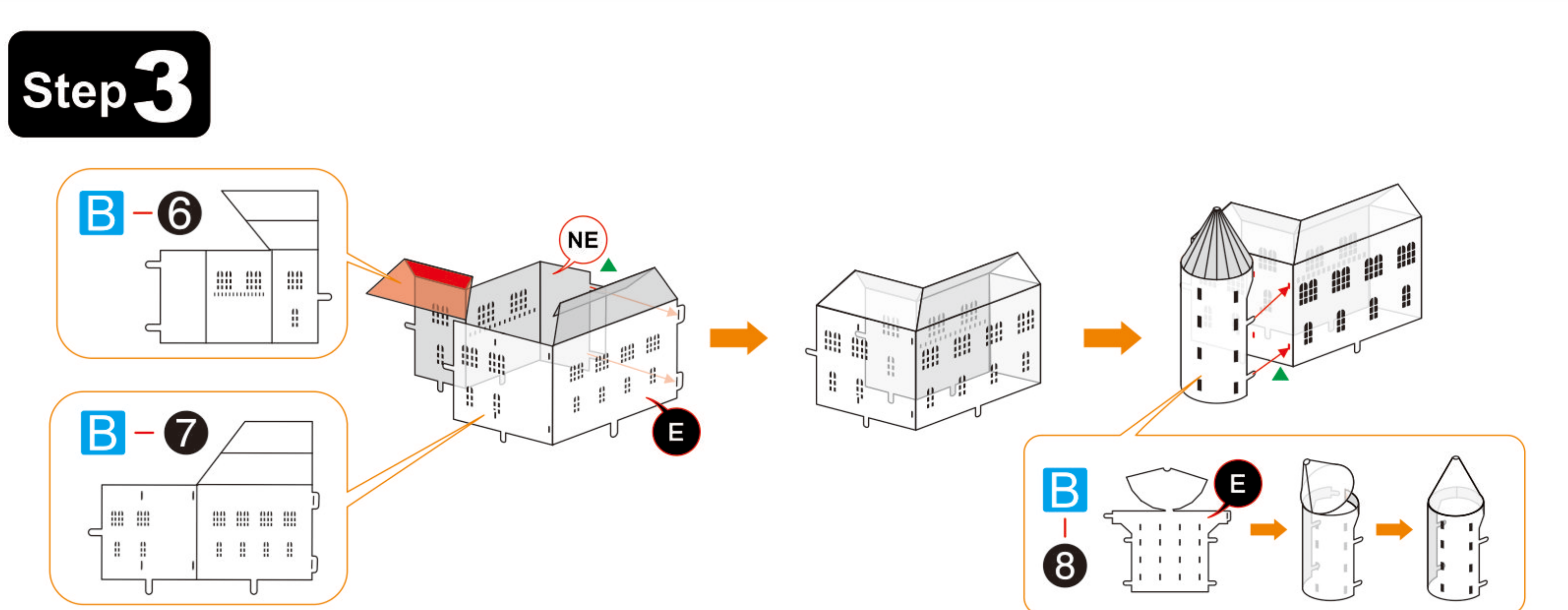
#### Step 1



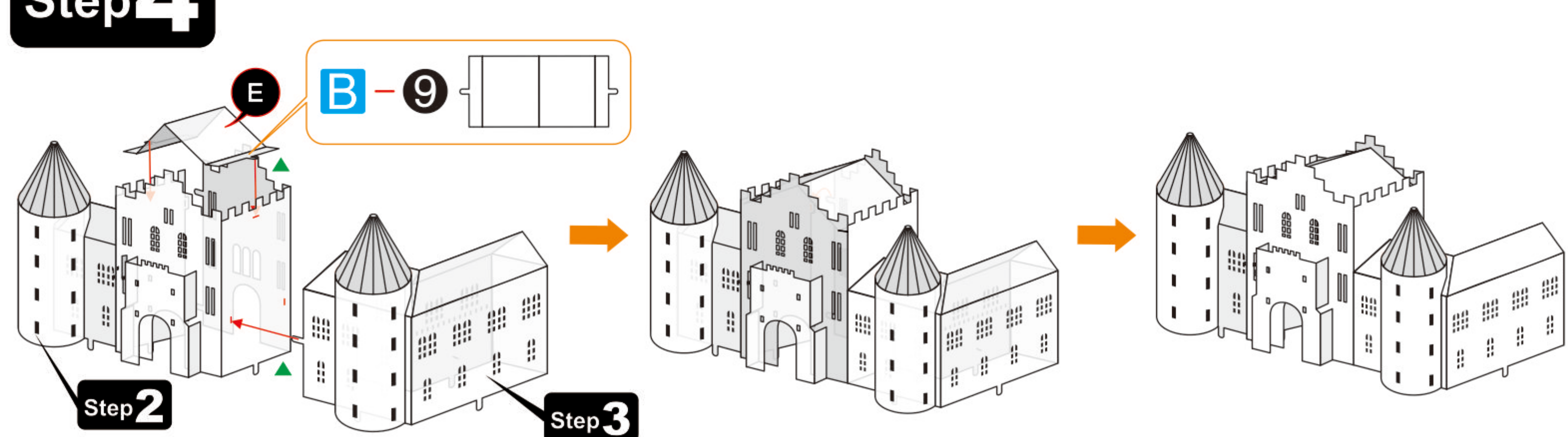
#### Step 2



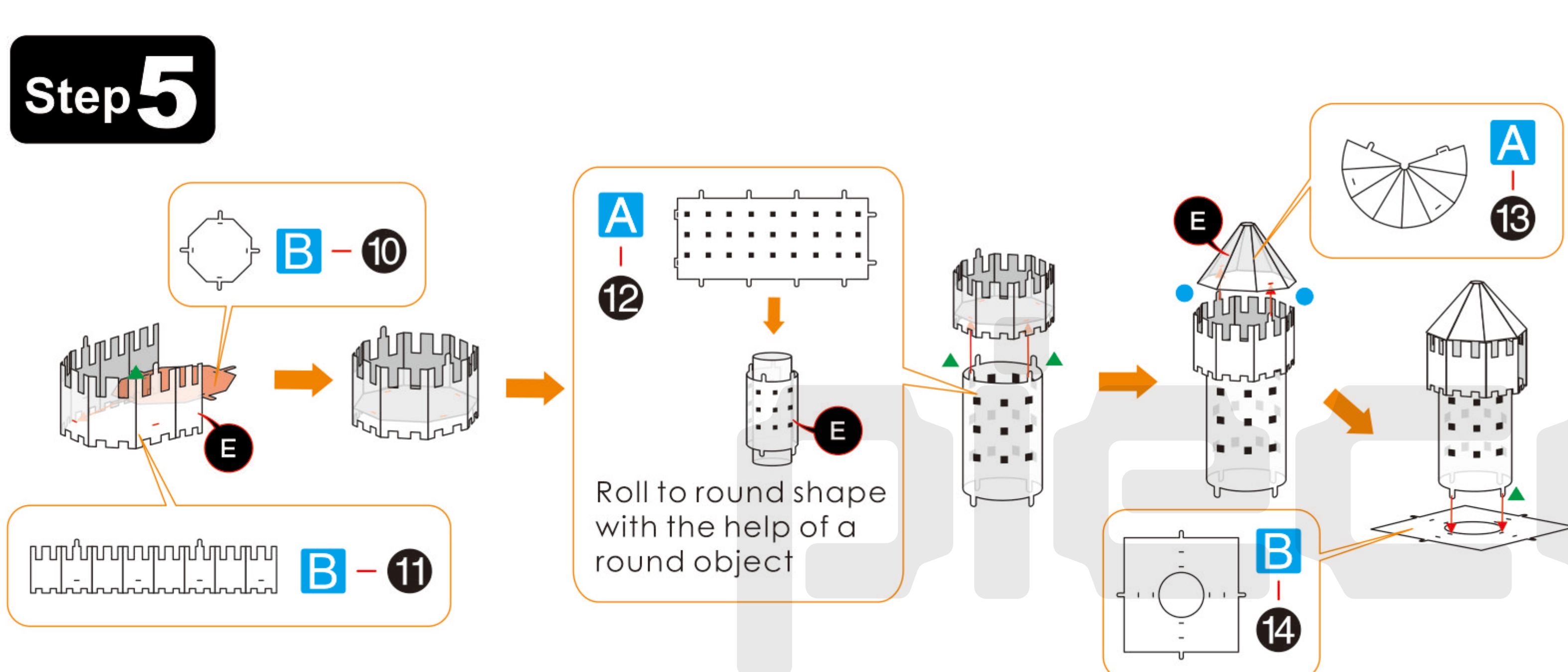
#### Step 3



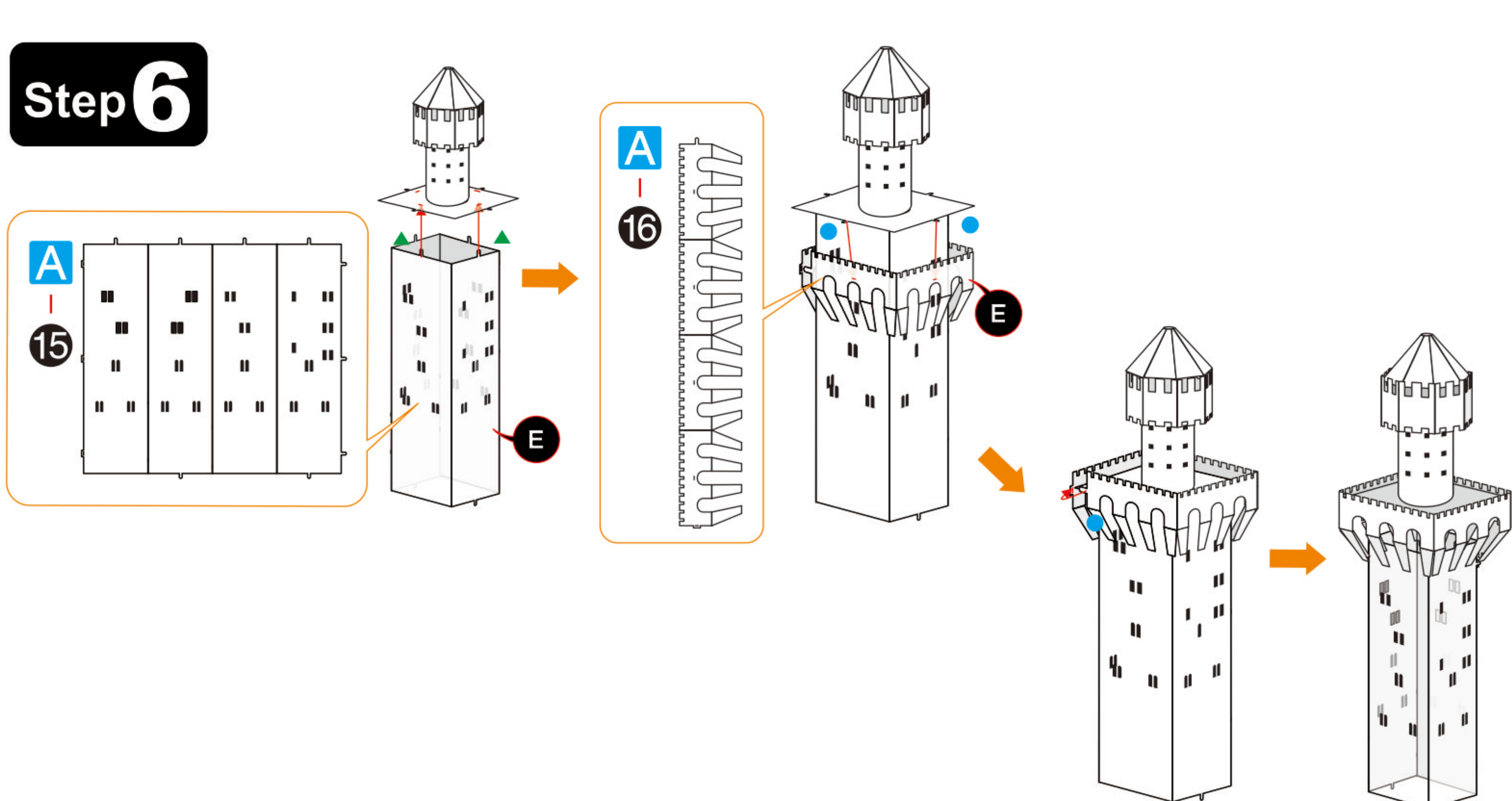
#### Step 4



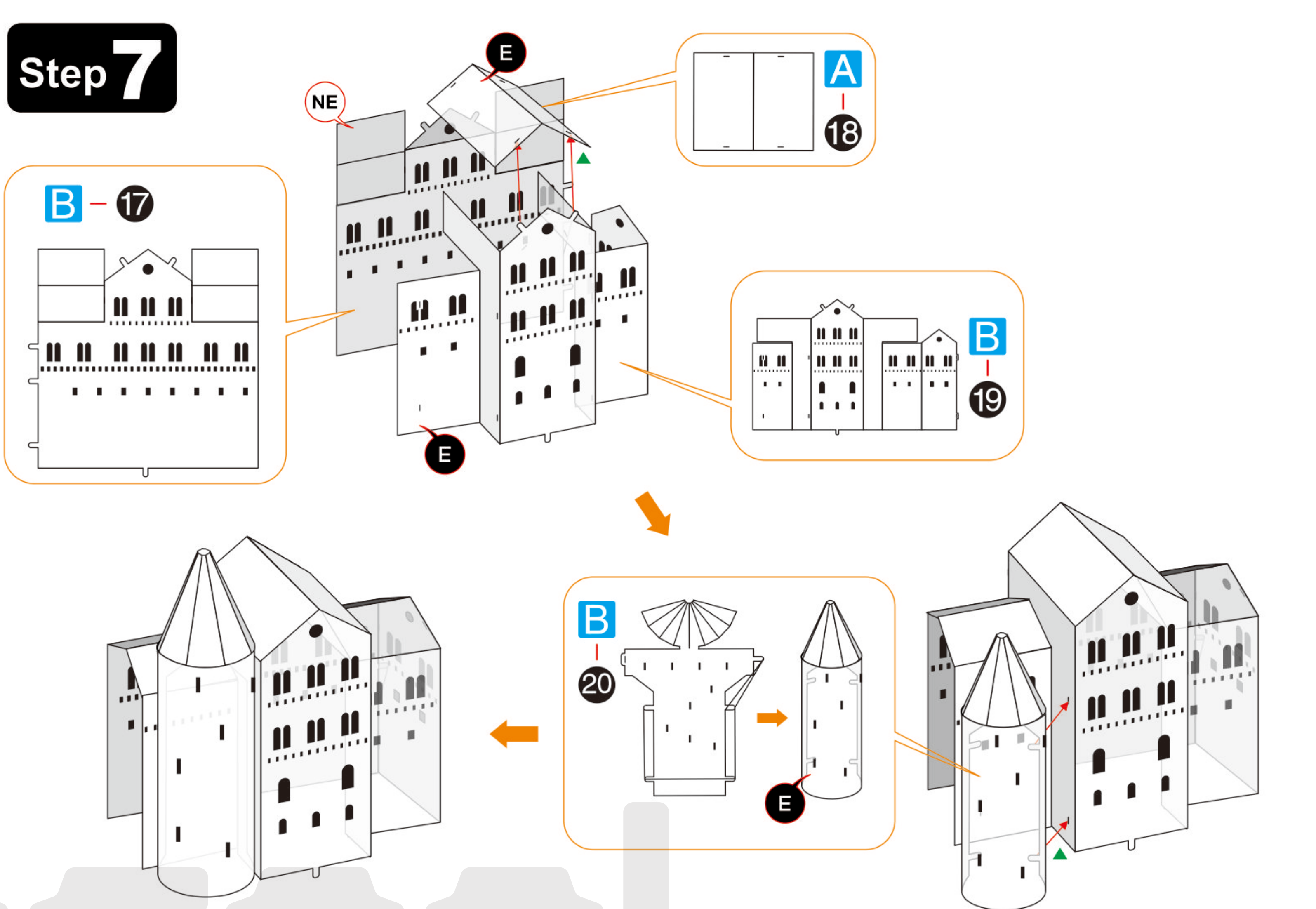
#### Step 5



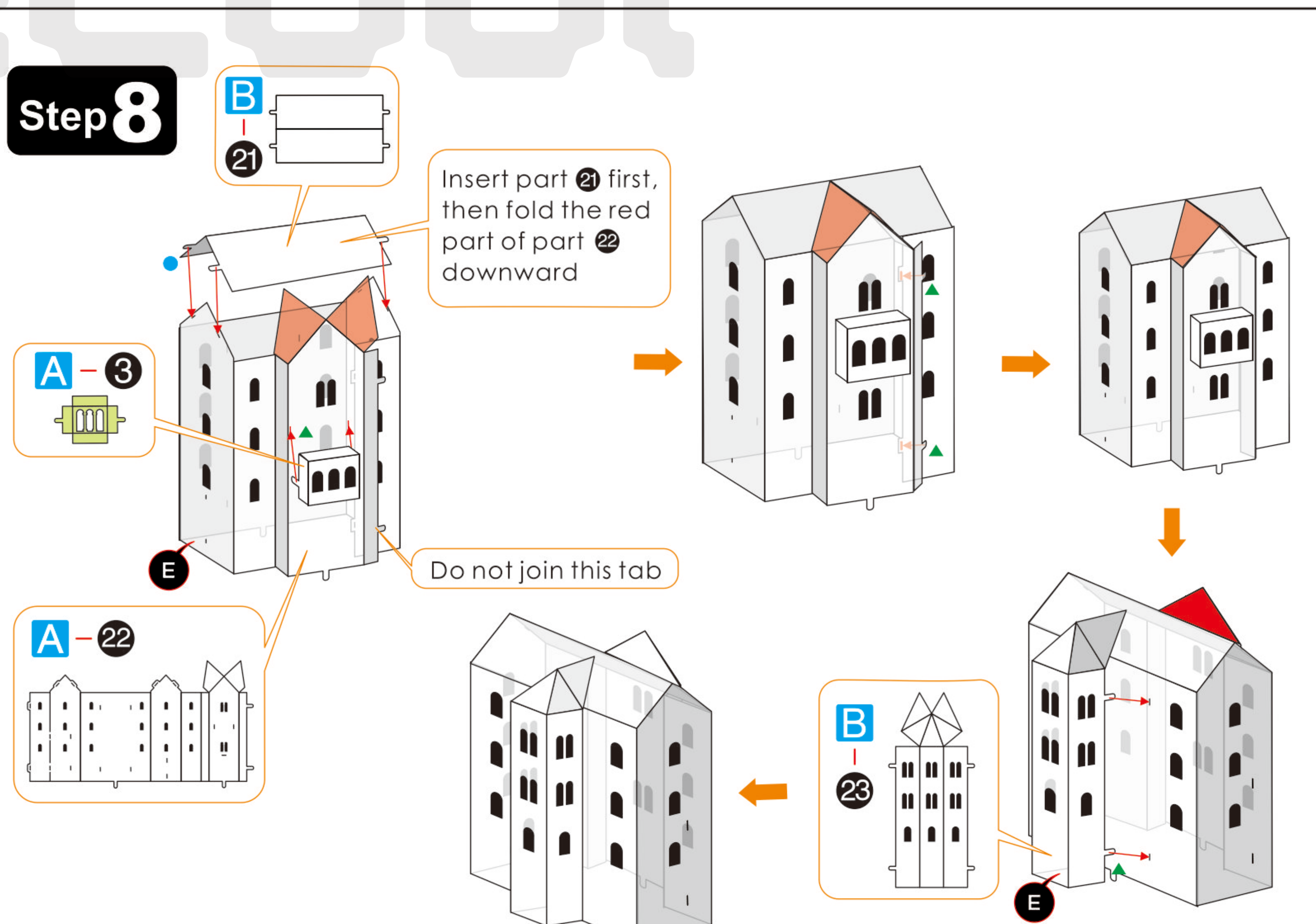
#### Step 6



#### Step 7



#### Step 8





### Step 9

Step 9

B-24

B-25

E

Step 8

### Step 12

Step 12

A-34

E

Fold the red part inward, near the roof

Step 11

Step 10

### Step 10

Step 10

A-26

A-28

A-29

B-27

E

E

E

E

Step 9

### Step 13

Step 13

B-31

B-35

A-37

B-36

E

E

E

E

Step 12

### Step 11

Step 11

B-32

B-33

E

E

### Step 14

Step 14

A-38

A-39

A-40

A-41

A-42

B-43

E

E

E

E

E

E

### Step 15

Step 15

Step 13

Step 14

Step 12

Step 9

### Step 17

Step 17

B-50

B-49

E

E

Step 9

### Step 16

Step 16

B-44

B-45

A-46

A-47

A-48

E

E

E

E

E

Step 15

### Step 18

Step 18

A-52

A-53

B-51

A-54

A-55

E

E

E

Step 16

Step 17

Step 7

Step 4